



THE FUTURE OF UNIFORMS



# ORDERING WITH **midford**

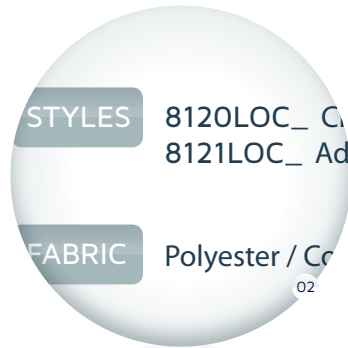


## FOUR STEPS:

01

**Choose Your Product**  
= Short Sleeve Polo

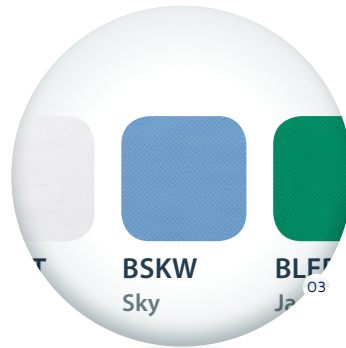
Browse through our range of fantastic products and choose an item that suits you



02

**Write Down Product Code**  
= 8120LOC

Each product has a unique code, seen in bold underneath each item



03

**Select Your Colour**  
= SKY = BSKW

Each product also has a variety of colour options, each with their own code to make ordering simple



04

**Add It All Together!**  
= 8120LOC\_BSKW

eg. 8120LOC\_BSKW

**TOO EASY!**

# FEATURE SCHOOL CLARKE ROAD SCHOOL, HORNSBY

Clarke Road School is at the forefront of innovative teaching in special education. At Clarke Road School we cater for students from Kindergarten to Year 12 with an intellectual disability. Clarke Road School is committed to promoting vibrant, engaged learning and the promotion of your child's independence in a caring, safe and happy school environment.

Over 18 months we have completely reimaged our school. The school promotions team worked with parents, staff, researchers, graphic designers, web site designer and consultants to take our school to new heights. The school logo captures our beliefs, visions and expectations for the quality education that we provide to students who learn differently. Consulting with Midford and designing our new uniforms was the final stage of this process. Our uniform symbolizes our pride, strength and our aspirations for a dynamic presence in our broader community. Our school is amazing and our students matter most!

Diane Robertson  
Principal, Clarke Road School



Taylor is wearing our sunsmart UPF50+ bucket hat.



Jagraj, Will, Taylor, Patrick, Michelle and Ava.



Ava, Will, Jagraj and Taylor.



Jagraj is wearing our six panel baseball cap with cross-over velcro for a custom fit.



Jagraj, Ava, Taylor, Aman, Michelle and Patrick.



Patrick, Ava, Will, Jagraj and Taylor.

CLARKE ROAD SCHOOL  
*Opening New Worlds*



Michelle is wearing our custom designed cotton-back micromesh polo.



Ava is wearing a made to order summer weight school dress.



# NEW FOR 2014

01  
GIRLS TAILORED  
STRAIGHT LEG PANTS



**NOW**  
AVAILABLE  
AS STOCKLINE

02  
SOFT SHELL JACKET



**NOW**  
AVAILABLE IN  
ADULT SIZING AS  
INDENT ONLY

03  
IDENTITY LABELS



**QR CODE  
NAME TAGS**  
HELPS RETURN  
ITEMS KIDS LOSE

## MIDFORD IDENTITY LABELS

80% OF SCHOOL KIDS,  
LOSE ITEMS WHICH  
CAN BE EXPENSIVE AND  
FRUSTRATING.

Here is a solution you can offer  
to parents & your school!

Get the labels and free mobile  
app, made to bring Kids Items  
back home!

- 01 Order your QR coded labels.
- 02 Download StrayHat app from  
Apple or Google App stores.
- 03 Write your child's name on the  
label and register them online.
- 04 If item gets lost, anyone can  
scan the QR code using the app.
- 05 The app instantly sends a private msg  
to parents or owners, that the item has  
been found, and its location so that it  
can be collected.

### Pack Includes:

- 15 x blank stick-on labels
- 15 x blank iron-on labels
- 12 month free App subscription

*Sold as bundles of 20 packs*

For further details visit  
[www.midford.com.au](http://www.midford.com.au)

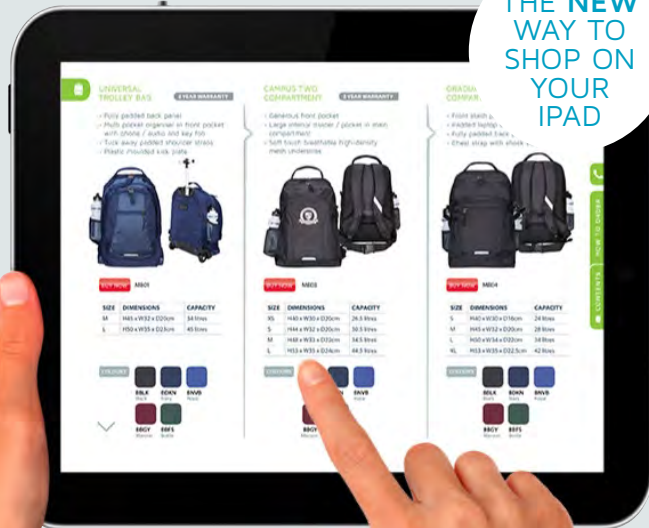


# ORDER ONLINE ANY TIME



**DOWNLOAD NOW!**  
(Just search for 'Midford')

THE NEW  
WAY TO  
SHOP ON  
YOUR  
IPAD



## HOW TO ACTIVATE YOUR MIDFORD ONLINE ACCOUNT

To get you started, please follow our 3 easy steps:

01: Go to our website:  
[www.midford.com.au/welcome](http://www.midford.com.au/welcome)

02: Type in your Username, which is your Account Number found on your invoices, as well as your post code, which is the post code of your regular shipping address.

If all details are correct an email will be sent to the email address on file which will allow you to click a link and set a new password. Should you need to update your email address please contact our Customer Support Team.

03: On the email received, click on the link "Click here to reset password" and you will be directed to a page where you can set your new password. You will need to enter your new password twice.

Once complete you will be able to login and your new password will be active. Please keep a record of your username and password for future ordering.

If you have any questions concerning the new website, setting up your email address, ordering difficulties or general questions about Midford, please contact our Customer Support Team on 1800 TEL MID or contact your Territory Manager.

SINCE 1946  
**midford.com.au**

# HOW TO ORDER

EMAIL [orders@midford.com.au](mailto:orders@midford.com.au) ONLINE [www.midford.com.au](http://www.midford.com.au)  
 FAX TOLL FREE  
 1800 FAX MID (329 643)

Contact your Territory Manager below for any  
 Made to Order, Extra Options or Special Requirements.

## NSW Metro

North / East	0410 044 413
West	0410 082 885
South	0420 858 110

## NSW Regional

Newcastle & Central Coast	0410 044 546
NSW Country West	0410 002 401
South Coast & Southern Highlands	0420 858 110

ACT	0420 858 110
-----	--------------

SA	0420 923 830
----	--------------

VIC	0417 273 826
-----	--------------

## QLD

Brisbane North	0410 635 195
Brisbane South, Gold Coast, Cairns, Townsville	0458 024 882

WA	0448 435 923
----	--------------

TAS	0410 044 413
-----	--------------

NT	0410 635 195
----	--------------





# POLO SHIRTS



STYLE 8120LOC

## FEATURES & ADVANTAGES:

01  
1x1 Flat Knit  
Ribbed Collar  
Comfort

02  
4-Hole Button  
Cross-stitched  
Strength & stability

03  
Set-in Sleeve  
Flexible movement

04  
Double-Stitched  
Seam  
Stronger seams

05  
Placket  
Clean finish

06  
Dense Weave  
Pique Fabric  
UV protection

07  
Twin Needle  
Top Stitched Hems  
Durable

Kai 8120LOC\_BMRS Short Sleeve Polo in Red, 9910\_BDBS Boy's Basic Shorts in Navy, SK05P3\_BWHT Sports Socks in White; Ashton 8120LOC\_BMRS Short Sleeve Polo in Red, 9910\_BDBS Boy's Basic Shorts in Navy, SK05P3\_BWHT Sports Socks in White; Charli 8120LOC\_BMRS Short Sleeve Polo in Red, 7000G\_BDBS Girl's Skort in Navy, SK01P3\_BWHT School Anklet in White.







# 12 BRILLIANT COLOURS

Introducing the best and the brightest! Made from the highest quality polyester cotton pique and in 12 brilliant colours, our smart range of polos are designed to hold their shape as well as their looks.



White



Lemon



Powder Blue



Royal



Navy



Grey



Sky



Jade



Bottle



Maroon



Red



Gold

## SHORT SLEEVE POLO SHIRT

- > Premium short sleeve unisex polo shirt
- > Finished with double stitched hems for extra strength and durability
- > Great for everyday wear



**STYLE** 8120LOC\_ Children's sizes 4-16  
8121LOC\_ Adult's sizes S-3XL

**FABRIC** Polyester / Cotton Pique Knit - 220gsm (White 240gsm)

### COLOURS



## LONG SLEEVE POLO SHIRT

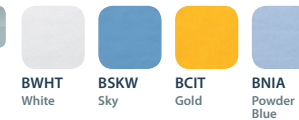
- > Unisex long sleeve classic style polo shirt
- > Ribbed collar and cuffs
- > Perfect for the cooler months



**STYLE** 8122L\_ Children's sizes 4-16

**FABRIC** Polyester / Cotton Pique Knit - 220gsm (White 240gsm)

### COLOURS







# MTO

## COTTON-BACK & COOL-DRY POLOS

### COTTON-BACK POLO SHIRTS

#### IDEAL FOR EVERYDAY

Natural fibres of cotton absorbs and releases perspiration, allowing the skin to breathe. It is soft & supple and less likely to irritate the skin.

**FABRIC** 50% Cotton 50% Polyester  
Micromesh - 190gsm

### COOL-DRY POLO SHIRTS

#### IDEAL FOR PE / SPORT

Lightweight polyester with moisture wicking technology for the ultimate comfort and performance.

**FABRIC** 100% Polyester 'Cool-Dry' Mesh - 160gsm



STYLE TP018

#### FEATURES & ADVANTAGES:

01	02	03	04
Wide range of designs	Lightweight	Wash & Wear	Moisture wicking
Create unique styles	Cool & comfortable	Easy care	Keeps you dry

### 01 SET-IN SLEEVE



STYLE TP013

### 03 RAGLAN SLEEVES



STYLE TP021

### 02 CUT AND SEW PANEL



STYLE TP020

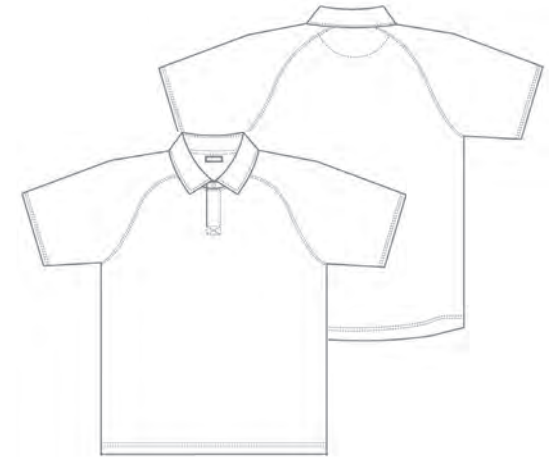
### 04 CONTRAST COLLAR AND PIPING



STYLE TP016

## DESIGN OPTIONS...

Organise a consultation today with your Territory Manager to view Midford's extensive selection of designs.



**PRICES ON APPLICATION:** For more information please contact your Territory Manager. Alternatively, call us toll-free on 1800 TEL MID (835 643) or email us at [info@midford.com.au](mailto:info@midford.com.au).



# MTO POLO SHIRTS

Midford made to order Polo Shirts are available in a variety of designs, colours and fabrics.

We can help you develop a unique polo your students will be proud to wear.

01 RAGLAN SLEEVE WITH CONTRAST PIPING



STYLE MTO\_PM01

02 UNIQUE CUT & SEW DESIGN WITH PIPING



STYLE TP015

06 CONTRAST COLLAR & PLACKET



STYLE TP003

07 SCREEN PRINT A CUSTOM DESIGN



STYLE TP001



03 CUSTOM STRIPED COLLAR



STYLE TP001

08 ENGINEERED STRIPES



STYLE MTO\_PM08

04 BRANDED COLLAR



STYLE MTO\_PM04

09 CUSTOM DESIGNED LOGO



STYLE TP019

05 HOUSE POLO SHIRTS



STYLE TP001

**PRICES ON APPLICATION:** For more information please contact your Territory Manager. Alternatively, call us toll-free on 1800 TEL MID (835 643) or email us at [info@midford.com.au](mailto:info@midford.com.au).



# SHIRTS



STYLE 1006C

## FEATURES & ADVANTAGES:

01	02	03	04	05	06	07	08
<b>Two Piece Collar</b>	<b>Reinforced Pocket Corners</b>	<b>4-Hole Button with Cut &amp; Sew Placket</b>	<b>Internal French Seams</b>	<b>Twin Needle Top Stitch Seams</b>	<b>Dense Weave Fabric</b>	<b>Reinforced Sleeve Placket</b>	<b>Two Button Cuff</b>
Closer fit	Strength	Strength & stability	Comfortable against skin	Stronger seams	Durable	Strengthens cuff	Adjustable fit

**Jacob** MTO Christian Brothers College Shirt, MTO Christian Brothers College Tie, MTO Christian Brothers College Pants; **Angus** 1006C\_BSKW Boy's Long Sleeve Classic Shirt, MTO The Scots College Tie, MTO The Scots College Shorts, MTO The Scots College Socks; **Bianca** 5037\_BWHT Girl's long Sleeve Basic Blouse in White, MTO Tie, 7400G\_BMVB Girl's Tailored Bootleg Pants in Navy; **Tiana** 5041PT\_BSKW Girl's long Sleeve Pin Tuck Blouse in Sky, MTO Tie, 7100G\_BDBS Girl's Pleated Day Skirt in Navy, T900G\_BDKN Girl's Microfibre Tights in Navy.







# BEST IN CLASS BRILLIANCE

## 11 REASONS WHY WE ARE LEADING THE WAY IN ACADEMIC SHIRTS...

Every Midford school shirt is made to the same meticulous standards as the world's biggest brands in dress shirts. That's why they not only fit well, they look great too!

## BENEFIT

### 01 HANDY HIDDEN SPARE BUTTON



STYLE 1012C

## STRENGTH

### 02 4-HOLE BUTTONS CROSS-STITCHED FOR EXTRA STRENGTH



STYLE 5036

### 03 TWIN NEEDLE STITCHING FOR EXTRA STRENGTH



STYLE 1010C

### 04 DENSE WEAVE FABRIC



STYLE 5032

### 05 TOP STITCHED POCKETS



STYLE 5038

## STYLE

### 06 PLACKET FRONT



STYLE 2020C

### 07 PIPING DETAIL



STYLE 5047

### 08 GIRL'S PETER PAN COLLAR



STYLE 5045PT

### 09 TWO PIECE COLLAR



STYLE 5037

## COMFORT

### 10 ADJUSTABLE CUFF



STYLE 1006C

### 11 3CM SIDE SPLIT



STYLE 2006C



LONG SLEEVE CLASSIC SHIRT

- > Classic long sleeve shirt
- > Dense weave Polyester / Cotton
- > Two piece collar & Placket Front



AUSTRALIA'S  
NUMBER 1  
SELLING  
SHIRT

**STYLE** 1006C\_ Children's sizes 4-28  
\* Available up to size 30  
\*\* Available up to size 34

**FABRIC** Polyester / Cotton Poplin - 110gsm

**COLOURS**

<b>BWHT**</b> White	<b>BSKW*</b> Sky Blue	<b>BQUG</b> Green	<b>BWSA</b> Fawn	<b>BGYG</b> Khaki
<b>BPAY</b> Lemon	<b>BASH</b> Vic Grey	<b>BALL</b> Vic Blue	<b>BGPM*</b> School Blue	<b>BNGY</b> Grey

LONG SLEEVE BRUSHED POLY / COTTON SHIRT

- > Premium long sleeve boy's shirt
- > Brushed Polyester / Cotton
- > Designed for cold weather



**STYLE** 1012C\_ Children's sizes 4-20  
\* Available up to size 22

**FABRIC** Brushed Polyester / Cotton - 117gsm

**COLOURS**

<b>BWHT</b> White	<b>BGPM*</b> School Blue

LONG SLEEVE BASIC SHIRT

- > Classic 1006C design
- > Straight hem & 3cm side split
- > Looks smart tucked in or out



**STYLE** 2006C\_ Children's sizes 4-30

**FABRIC** Polyester / Cotton Poplin - 110gsm

**COLOURS**

<b>BWHT</b> White	<b>BSKW</b> Sky Blue	<b>BGPM</b> School Blue

### SHORT SLEEVE CLASSIC SHIRT

- > Short sleeve with chest pocket
- > Two piece collar with Placket Front
- > Double stitched seams for added strength



**STYLE** 1010C\_ Children's sizes 4-28  
 \* Available up to size 30  
 \*\* Available up to size 34

**FABRIC** Polyester / Cotton Poplin - 110gsm

**COLOURS**



### SHORT SLEEVE BASIC SHIRT

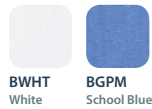
- > Same as 1010C with straight hem
- > 3cm side splits
- > Looks neat tucked in or out



**STYLE** 2020C\_ Children's sizes 4-30

**FABRIC** Polyester / Cotton Poplin - 110gsm

**COLOURS**



### SHORT SLEEVE OPEN NECK SHIRT

- > Popular boy's short sleeve shirt
- > Open neck collar
- > Straight hem



**STYLE** 1038C\_ Children's sizes 4-22  
 \* Available up to size 28

**FABRIC** Polyester / Cotton Poplin - 110gsm

**COLOURS**







# BLOUSES



STYLE 5045



## FEATURES & ADVANTAGES:

01  
**Peter Pan  
Collar**

Feminine Design

02  
**Placket**

Clean finish

03  
**Twin Needle  
Top Stitched  
Seams**

Stronger seams

04  
**Four Hole  
Button  
Cross-Stitched**

Strength &  
Stability

05  
**High Quality  
Poplin**

Easy Care

06  
**3cm Side Splits**

Extra Fit

## GIRL'S BLOUSES

### LONG SLEEVE PETER PAN BLOUSE

- > Top selling long sleeve girl's blouse
- > Peter Pan collar
- > A smart, formal design for girl's



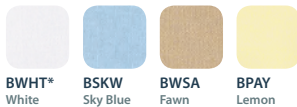
STYLE

5041\_ Children's sizes 4-24  
\* Available up to size 26

FABRIC

Polyester / Cotton Poplin - 110gsm

COLOURS



BWHT\*  
White

BSKW  
Sky Blue

BWSA  
Fawn

BPAY  
Lemon

### LONG SLEEVE PIN TUCK BLOUSE

- > Based on the popular 5041 Midford design
- > Pin tucks for a more refined, tailored look
- > Peter Pan collar



STYLE

5041PT\_ Children's sizes 6-26

FABRIC

Polyester / Cotton Poplin - 110gsm

COLOURS



BWHT  
White

BSKW  
Sky Blue

### LONG SLEEVE BRUSHED POLY / COTTON

- > Classic long sleeve girl's blouse
- > Made from brushed Polyester / Cotton
- > Great for the winter months



STYLE

5032\_ Children's sizes 4-22

FABRIC

Brushed Polyester / Cotton - 117gsm

COLOURS



BWHT  
White



### LONG SLEEVE BASIC BLOUSE

- > Long sleeve basic girl's shirt
- > Tailored with two piece collar
- > Perfect with or without a tie



**STYLE** 5037\_ Children's sizes 4-24

**FABRIC** Polyester / Cotton Poplin - 110gsm

**COLOURS**

<b>BWHT</b> White	<b>BSKW</b> Sky Blue	<b>BWSA</b> Fawn
<b>BPAY</b> Lemon	<b>BGPM</b> School Blue	

### SHORT SLEEVE BASIC BLOUSE

- > Tailored short sleeve school shirt
- > Made from dense weave Polyester / Cotton
- > Straight hem



**STYLE** 5036\_ Children's sizes 4-24

**FABRIC** Polyester / Cotton Poplin - 110gsm

**COLOURS**

<b>BWHT</b> White

### SHORT SLEEVE OPEN NECK BLOUSE

- > Basic short sleeve girl's shirt
- > Open neck collar with side splits
- > Looks great tucked in or out



**STYLE** 5038\_ Children's sizes 4-24  
\* Available up to size 26

**FABRIC** Polyester / Cotton Poplin - 110gsm

**COLOURS**

<b>BWHT*</b> White	<b>BSKW</b> Sky Blue	<b>BPAY</b> Lemon	<b>BGPM</b> School Blue

### SHORT SLEEVE PETER PAN BLOUSE

- > Girl's short sleeve shirt
- > Peter Pan collar
- > Made from dense weave Polyester / Cotton



**STYLE** 5045\_ Children's sizes 4-24  
\* Available up to size 26

**FABRIC** Polyester / Cotton Poplin - 110gsm

**COLOURS**

		
<b>BWHT*</b> White	<b>BSKW</b> Sky Blue	<b>BPAY</b> Lemon

### SHORT SLEEVE PIN TUCK BLOUSE

- > Short sleeve girl's shirt
- > Peter Pan collar
- > Pin tucks to create a more fitted look



**STYLE** 5045PT\_ Children's sizes 6-26  
\* Available up to size 28

**FABRIC** Polyester / Cotton Poplin - 110gsm

**COLOURS**

	
<b>BWHT*</b> White	<b>BSKW</b> Sky Blue

### SHORT SLEEVE AUDREY BLOUSE

- > Ladies fitted short sleeve shirt
- > Piping detail on collar & sleeves
- > Tailored hemline sits over skirt or pants



**STYLE** 5047\_ Ladies sizes 8-24

**FABRIC** Polyester / Cotton Poplin - 110gsm

**COLOURS**


<b>BWHT</b> White





# MTO FABRIC OPTIONS

## MULTIPLE OPTIONS WITH MADE TO ORDER SHIRTING FABRIC

Add a distinctive & smart look to your school's uniform. Select a classic Midford style & have it made up in one of our special shirting fabrics.

01 PIN STRIPE



BLUE

STYLE MTO\_SPIN

02 END ON END



BLUE

STYLE MTO\_SEND

05 POPLIN



SAXE BLUE

STYLE MTO\_SPOP

06 OXFORD



WHITE

STYLE MTO\_SOXF

03 CAN001 STRIPE



WHITE

STYLE MTO\_SCAN

07 BENGAL STRIPE



GREY

STYLE MTO\_SBEG

04 BENGAL STRIPE



NAVY

STYLE MTO\_SBEN

08 SMC001



NAVY

STYLE MTO\_SSMC

# MIX & MATCH



STEP 1 Choose one of our great stockline styles or create your own unique style.

STEP 2 Select the material from our made-to-order shirting fabric range.

STEP 3 A sample of your design is made for your approval.

PRICES ON APPLICATION: Minimum quantities apply. For more information please contact your Territory Manager. Alternatively, call us toll-free on 1800 TEL MID (835 643) or email us at [info@midford.com.au](mailto:info@midford.com.au).



# MTO SHIRTS & BLOUSES

## EVERY SCHOOL IS DIFFERENT

That's why we offer a simple, convenient, customised service tailored to every individual school.

**PRICES ON APPLICATION:** Minimum quantities apply. For more information please contact your Territory Manager. Alternatively, call us toll-free on 1800 TEL MID (835 643) or email us at [info@midford.com.au](mailto:info@midford.com.au).

## 06 MATCHING COLLAR, PLACKET & CUFF TRIM



STYLE MTO\_SH06

## 01 CONTRAST PIPING



STYLE MTO\_SH01

## 02 SINGLE / MULTI COLOURED EMBROIDERY



STYLE MTO\_SH02

## 07 CUSTOM FABRIC



STYLE MTO\_SH07

## 08 BUTTONS DYED TO MATCH CREST



STYLE MTO\_SH08



03 ADD YOUR SCHOOL'S CREST



STYLE MTO\_SH03

09 PLACKET FRONT



STYLE MTO\_SH09

04 CUFFED SLEEVE



STYLE MTO\_SH04

05 PIPING DETAIL ON POCKET



STYLE MTO\_1038IGS

10 AVAILABLE IN VARIOUS COLOURED PIPING



STYLE MTO\_SH10





# BLAZERS



STYLE NB500Y

## FEATURES & ADVANTAGES:

01	02	03	04	05	06	07	08	09
Shoulder Pads	Sleeve Wadding	Key Hole Design	Pocket Lining with Invisible Stitching	Melton Under Collar	Two Piece Collar	Chest Pocket	2x2 Twill Construction with Full Front Fusing	25mm Let-down in Lining
Smooth contour	Avoids twisting	Ease of button	Suit quality finish	Shape stability	Prevents puckering	Easy embroidery	Abrasion resistant	Easy alteration

Zoe MTO Mercedes College Blazer, MTO Mercedes College Shirt, MTO Mercedes College Tie, MTO Mercedes College Skirt, T898G\_BDKN Girl's Cotton Tights in Navy; Jacob MTO Mercedes College Blazer, MTO Mercedes College Shirt, MTO Mercedes College Tie, MTO Mercedes College Pants.





# BLAZERS

First class quality makes our blazers nothing less than the best.

The pattern adopted in stock is a two button front-styling, fully lined with invisible stitched pockets. There is a plain back in the garment to allow it to be worn by both males and females. This unisex fit pattern has been successfully used by schools all over Australia.



Maroon



Dark Navy



Bottle Green



Dark Junior



New Royal



Light Maroon



Black

## BLAZER

- > Fully customisable
- > Quality tailored finish
- > Australian designed fabrics

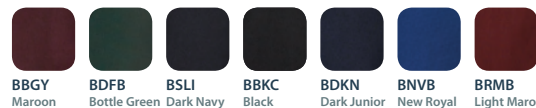
### STYLE

NB500C\_ Children's Sizes 9-11  
 NB500Y\_ Youth Sizes 13-17  
 NB500A\_ Adult Sizes 5-10

### FABRIC

45% Wool / 55% Polyester  
 2 X 2 Twill Weave

### COLOURS



# ELEVEN REASONS TO CHOOSE OUR BLAZERS

## 01 LOW MINIMUMS

Available in 7 of the most popular school colours.

## 02 TWILL CONSTRUCTION

Fabric 2 x 2 twill construction of fabric gives abrasion resistance in excess of 40,000 rubs.

## 03 INTERNAL CONSTRUCTION

All garments feature an additional full front fusing (this allows the garment to maintain its shape over the years of expected wear and tear).

## 04 EXTERNAL POCKETS

All exterior pockets are lined before being invisibly stitched onto the blazer. It provides a "suit quality" finish as a result.

## 05 SHOULDER PAD

A sponge shoulder pad with cloth cover is supplied in all garments.

## 06 3 INTERNAL POCKETS

Internally all blazers feature 3 pockets. One pocket features a zip pocket to allow for a mobile phone / iPod to be safely kept. One pocket also features a button and flap to securely hold other items such as a wallet. The remaining pocket is a standard open pocket.

## 07 BUTTON HOLES

Button holes use a key hole design stitched with thick thread to ensure the integrity of the button hole through the life of the garment.

## 08 INTERNAL CONSTRUCTION

Internal Construction: Collar design includes two piece design to prevent puckering at collar when worn. Melton is added under the collar for stability.

## 09 SLEEVE WADDING

A sleeve head wadding is adopted on all garments and each sleeve is sewn into the blazer using an automatic machine. This process ensures that the sleeve pitch is correct and provides for the sleeve to not appear "twisted" when compared to sleeves which have been manually sewn into the body.

## 10 EMBROIDERY

Embroidery is completed using quality threads. These polyester threads will not fade or break down over time.

## 11 SLEEVES

All sleeves feature a 25mm let down in the lining. This allows for quick and easy sleeve length adjustment (either lengthening or shortening).

## EXTRA OPTIONS & REQUIREMENTS

### EMBROIDERY

You will need to supply an EPS file of your logo / school crest or supply a clean / clear legible letterhead. You will also need to provide appropriate PMS colours for matching. A sample embroidered pocket will be provided for approval. Please allow 2 weeks for embroidery sample. Bulk production will only commence on receipt of written approval.

### BRAID

Supply NEW garment with braid / trim and we will closely match it to the nearest available stock braid colour. Please provide PMS colours if applicable. A sample piece of braid / trim will be provided for approval.

### ADDITIONAL INFORMATION

#### DELIVERY LEADTIME

Blazer - Please allow 3-4 weeks. Extra Options Blazer -

Please allow 8-10 weeks (subject to receipt of written approval).

### SIZE GUIDE

Children sizes	9	11				
To Fit Chest Size (cms)	75	80				
Youth sizes	13	15	17			
To Fit Chest Size (cms)	85	90	95			
Adult sizes	5	6	7	8	9	10
To Fit Chest Size (cms)	100	105	110	115	120	125

### MINIMUM QUANTITY

Blazer - minimum 3 per colour.

Blazer plus Embroidery - minimum 6 per order.

Blazer plus Braid/Trim - minimums provided on individual basis.

**PRICES ON APPLICATION:** Minimum quantities apply.

For more information please contact your Territory Manager. Alternatively, call us toll-free on 1800 TEL MID (835 643) or email us at [info@midford.com.au](mailto:info@midford.com.au).





# MTO BLAZERS

We know what an important statement a well-tailored coat or blazer makes about your school. That's why Midford incorporates a range of first-class quality innovations that make our blazers nothing less than the best.

## 05 CUSTOM STRIPED BRAID



STYLE MTO\_BL09

## 01 CUSTOM MADE STRIPED FABRIC



STYLE MTO\_BL01

## 02 QUALITY TAILORED FINISH



STYLE MTO\_BL10

## 06 100% WOOL FLANNEL FABRIC



STYLE MTO\_BL05

## 07 FULLY BRAIDED IN CONTRAST TRIM



STYLE MTO\_BL04

03 BRAID DYED TO MATCH LOGO / CREST



STYLE MTO\_BL11

08 PIN-STITCHED EXTERNAL POCKETS



STYLE MTO\_BL08

04 HONOURS OR SPECIALTY BLAZER



STYLE MTO\_BL06

09 TOP QUALITY FUSING



STYLE MTO\_BL09

# DESIGN OPTIONS...

Organise a consultation today with your Territory Manager to view Midford's extensive selection of designs.



**PRICES ON APPLICATION:** For more information please contact your Territory Manager. Alternatively, call us toll-free on 1800 TEL MID (835 643) or email us at [info@midford.com.au](mailto:info@midford.com.au).



# KNITWEAR



STYLE 3100

## FEATURES & ADVANTAGES:

01	02	03	04	05
1x1 Flat Knitted Rib Neckline	Raglan Sleeve	1x1 Knitted Rib Sleeve Opening & Body Hem	Safety Stitched Seams	High Quality Knit
Shape stability	Flexible movement	Shape stability	Strengthens seams	Pill resistant

Brad MTO Pin Stripe Long Sleeve Shirt, 1500M\_BNII Boy's Melange Extendable Pants, 3100\_BDKN V-neck Cotton Blend Pullover; Zoe 5037\_BWHT Girl's Long Sleeve Basic Blouse in White, MTO Tie, MTO Girl's Skirt in Navy, MTO Girl's Cardigan in Navy, T898G\_BDKN Girl's Cotton Tights in Navy.







# MTO KNITWEAR

Midford knitwear guarantees your kids are kept warm! Add a great range of Made to Order options, for a winter uniform that is sure to impress!

**PRICES ON APPLICATION:** Minimum quantities apply. For more information please contact your Territory Manager. Alternatively, call us toll-free on 1800 TEL MID (835 643) or email us at [info@midford.com.au](mailto:info@midford.com.au).

## 03 MACHINE WASHABLE FOR EASY CARE



STYLE MTO\_KN03

## 01 ADD YOUR SCHOOL'S LOGO / CREST



STYLE MTO\_KN06

## 04 CUSTOM COLOURS



STYLE MTO\_KN04

## 02 STRIPE DETAIL



STYLE MTO\_KN02

## 05 HIGH QUALITY LOW-PILL YARN



STYLE MTO\_KN05

## KNITWEAR

### BASIC V-NECK WOOL PULLOVER

- > Wool blend V-neck school jumper
- > Traditional unisex style
- > Made from hard wearing, soft Australian Merino Wool
- > Machine washable for easy care



STYLE

2000\_ Children's sizes  
4-28

FABRIC

80% Wool 20% Nylon

COLOURS



BBGY  
Maroon

BBFS  
Bottle

BDKN  
Navy

### V-NECK COTTON BLEND PULLOVER

- > Cotton and low-pill acrylic, perfect for milder climates
- > Super soft yarn and comfortable
- > Durable, machine-washable & holds shape
- > Superior colour retention



STYLE

3100\_ Children's sizes 4-28

FABRIC

50% Cotton 50% Low Pill Acrylic

COLOURS



BNGY  
Grey

BBLK  
Black

BMRS  
Red

BBGY  
Maroon

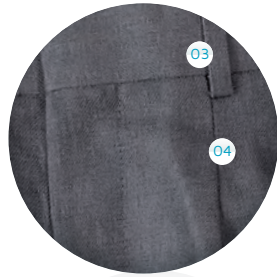
BDKN  
Navy

BNVB  
Royal

BBFS  
Bottle



# SHORTS & PANTS



STYLE 1500M

## FEATURES & ADVANTAGES:

01	02	03	04	05	06	07	08	09	10
Safety Pocket	Front Fob Pocket	Bar Tacked Belt Loops	Front Double Pleat	Blind Hem Stitch & 4cm Allowance	Hook & Bar Fastening	Discreet Extendable Waistband	Double Welt Back Hip Pocket	Treated With Teflon	Centre Crease
Valuables storage	Coin storage	Reinforced durability	Extra room	Adjustable leg length	Easy access	Allows in-between sizes	Reinforced durability	Stain release	Permanent crease

**Bianca** 5037\_BSKW Girl's Long Sleeve Basic Blouse in Sky, MTO Tie, 7400G\_BSMP Girl's Tailored Bootleg Pants in Grey; **Angus** 1006C\_BSKW Boy's Long Sleeve Classic Shirt in Sky, MTO The Scots College Tie, MTO The Scots College Shorts, MTO The Scots College Socks; **Kai** 1006C\_BSKW Boy's Long Sleeve Classic Shirt in Sky, MTO Tie, B59\_BDBS Boy's Elastic Back Shorts, SK03P3\_BDKN Knee High Socks in Navy.







# SHORTS AND PANTS

## WE'VE DONE OUR HOMEWORK

Midford Pants & Shorts offer a range of great features for both students & schools alike. Well-known & well-made, our heavy weight, hard wearing fabrics will stand up to everyday schoolyard activities.

## MIX AND MATCH OUR STYLES & FABRICS.

These are available in alternative fabrics to create your own custom design.

### 01 HIGH QUALITY FLY ZIP



STYLE 9904

## STRENGTH

### 02 TWIN NEEDLE STITCHING



STYLE 1500M

### 03 DOUBLE KNEE FOR EXTRA STRENGTH



STYLE 9112PLP

## COMFORT

### 04 TRADITIONAL TAB SIDE FASTENERS



### 06 FULL ELASTIC WAIST



### 05 ADJUSTABLE SIDE BUTTON TAB



### 07 EXTENDABLE WAISTBAND



## STYLE

### 08 EXTERNAL CARGO POCKET



## BENEFIT

### 09 MULTIFUNCTIONAL ZIP POCKET





# BOY'S SHORTS

A range of Midford shorts are Teflon® coated for lasting protection against stains and everyday wear and tear.

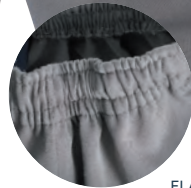
The Teflon® fends off soil, stains and spills without impacting the fabric's weight, look, feel, colour or breathability.

## BASIC SHORTS

- > Best selling Midford boy's shorts
- > Full elastic waist with drawstring
- > Right hand velcro safety pocket



**BEST SELLING BOY'S SHORTS**



ELASTIC WAIST

**STYLE** 9910\_ Children's sizes 4-18

**FABRIC** Polyester / Viscose Gaberdine - 260gsm

- COLOURS**
- BBFS** Bottle
  - BDBS** Navy
  - BDCO** Bright Royal
  - BNGY** Mid Grey

## ELASTIC BACK SHORTS

- > Premium boy's Gaberdine short
- > Pleated front & two pockets
- > Comfortable elastic back waist



**STYLE** B59\_ Children's sizes 4-18

**FABRIC** Polyester / Viscose Gaberdine - 260gsm

- COLOURS**
- BCED** Khaki
  - BDBS** Navy
  - BSMP** Mid Grey

## JUNIOR SHORTS

- > Comfortable & smart looking
- > Half elastic back waist
- > Front pocket with safety zipper



SAFETY POCKET

**STYLE** 9903L\_ Children's sizes 4-16

**FABRIC** Polyester / Viscose Gaberdine - 260gsm

- COLOURS**
- BCED** Khaki
  - BDBS** Navy
  - BSMP** Mid Grey

## TAB SHORTS

- > Adjustable short with tab side fasteners
- > Pleated front with hip pocket
- > Teflon® stain release



TAB SIDE  
FASTENERS

**STYLE** 9904L\_ Children's sizes 4-16  
9904M\_ Adult's sizes 3-8

**FABRIC** Polyester / Viscose  
Gaberdine - 260gsm

Teflon  
Fabric Protector

**COLOURS**



## EXTENDABLE SHORTS

### MELANGE

- > Popular style featuring discreet extendable waistband
- > Multifunctional security pocket



EXTENDABLE  
WAISTBAND

**STYLE** 155B\_ Children's sizes 4-18  
155M\_ Adult's sizes 3-12

**FABRIC** Polyester / Viscose  
Melange - 210gsm

Teflon  
Fabric Protector

**COLOURS**



### GABERDINE

- > Same style now available in Gaberdine
- > Fewer wrinkles & more durable

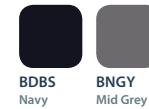


**STYLE** 155BG\_ Children's sizes 4-18  
155MG\_ Adult's sizes 3-12

**FABRIC** Polyester / Viscose  
Gaberdine - 260gsm

Teflon  
Fabric Protector

**COLOURS**







## MELANGE ELASTIC BACK SHORTS

- > Elastic back waist shorts
- > Pleated front & two side pockets
- > Made from Polyester / Viscose Melange



**STYLE** B59MEL\_  
Children's sizes 4-18

**FABRIC** Polyester / Viscose  
Melange - 210gsm



**COLOURS**   
BSMP  
Mid Grey

## CARGO SHORTS

- > Casual, easy-to-wear cargo shorts
- > Elastic waist with drawstring
- > For those who prefer natural fibres



EXTERNAL  
CARGO  
POCKET

**STYLE** 202\_ Children's sizes 4-16  
202M\_ Adult's sizes S-XL

**FABRIC** 100% Brushed  
Cotton Drill - 230gsm

**COLOURS**   
BSMP  
Mid Grey

## CLASSIC SHORTS




- > Classic boy's style made from premium Polyester / Wool fabric
- > Fully lined with adjustable tab sides



INDENT  
ONLY  
MINIMUMS  
REQUIRED

**STYLE** B151\_  
Children's sizes 4-16

**FABRIC** Polyester / Wool - 260gsm

**COLOURS**     
BPHA Navy BDSH Mid Grey BSHA Dark Grey

# BOY'S PANTS

Choose from a wide variety of styles like boy's pleated pants, cargo pants, double-knee pants, and basic pants.


## BASIC PANTS

- > Full elastic waist with drawstring
- > Two side pockets
- > Velcro safety pocket



MIDFORD'S  
NUMBER 1  
SELLING  
PANTS

**STYLE** 9116\_ Children's sizes 4-18  
9116M\_ Adult's sizes S-3XL

**FABRIC** Polyester / Viscose Gaberdine - 260gsm 


**COLOURS**    
BDBS Navy BSMP Mid Grey

## DOUBLE KNEE PANTS

- > Same style as 9116 designed with double knee protection providing added value for adventurous kids



**STYLE** 9116DK\_ Children's sizes 4-18

**FABRIC** Polyester / Viscose Gaberdine - 260gsm 

**COLOURS**    
BDBS Navy BSMP Mid Grey

## CARGO PANTS

- > Easy-to-wear cargo pants
- > Comfortable elastic waist and drawstring
- > Heavy brushed cotton fabric



**STYLE** 404\_ Children's sizes 4-16  
404M\_ Adult's sizes S-4XL

**FABRIC** 100% Cotton Brushed Drill - 230gsm

**COLOURS**   
BSMP Mid Grey



## ELASTIC BACK PANTS

- > Pleated pants with press stud and zip fly
- > Two side pockets & back pocket
- > Teflon® stain release



STYLE

9109PL\_  
Children's sizes 4-16

FABRIC

Polyester / Viscose  
Gaberline - 260gsm

Teflon  
Fabric Protector

COLOURS



BDBS  
Navy



BSMP  
Mid Grey

## ELASTIC BACK PANTS WITH DOUBLE KNEE

- > Same style as 9109 with a double knee for added strength and extra durability
- > Teflon® stain release



DOUBLE  
KNEE

STYLE

9109PLP\_  
Children's sizes 4-16

FABRIC

Polyester / Viscose  
Gaberline - 260gsm

Teflon  
Fabric Protector

COLOURS



BDBS  
Navy



BSMP  
Mid Grey

## MELANGE ELASTIC BACK PANTS

- > Based on the popular 9109PLP style
- > Premium Polyester / Viscose Melange
- > Double knee for added reinforcement



DOUBLE  
KNEE

**STYLE** 9112PLP\_  
Children's sizes 4-16

**FABRIC** Polyester / Viscose  
Melange - 210gsm



**COLOURS**

<b>BJES</b> Dark Navy	<b>BNII</b> Mid Grey

## EXTENDABLE PANTS MELANGE

- > Very popular boy's style
- > Discreet extendable waistband
- > Multifunctional security pocket



**STYLE** 1500B\_ Children's sizes 4-18  
1500M\_ Adult's sizes 3-12

**FABRIC** Polyester / Viscose  
Melange - 210gsm



**COLOURS**

<b>BJES</b> Dark Navy	<b>BBKC</b> Black	<b>BNII</b> Mid Grey	<b>BPFT</b> Dark Grey

## GABERDINE

- > Same style now in Gaberdine
- > Teflon® stain release treated fabric
- > Machine Washable



**STYLE** 1500BG\_ Children's sizes 4-18  
1500MG\_ Adult's sizes 3-12

**FABRIC** Polyester / Viscose  
Gaberdine - 260gsm



**COLOURS**

<b>BDBS</b> Navy	<b>BNGY</b> Mid Grey





# GIRL'S SHORTS & PANTS



## FEATURES & ADVANTAGES:

- |                      |                   |                                  |                      |                    |
|----------------------|-------------------|----------------------------------|----------------------|--------------------|
| 01                   | 02                | 03                               | 04                   | 05                 |
| <b>Double Button</b> | <b>Hip Pocket</b> | <b>Premium Stretch Gaberdine</b> | <b>Hipster</b>       | <b>Bootleg cut</b> |
| Secure               | Valuables storage | Easy Fit                         | Sits low on the hips | Flattering style   |

STYLE 7400G

## TAILORED STRAIGHT LEG PANTS

- > Comfortable & smart looking
- > Premium stretch Gaberdine fabric
- > Easy care: Machine-washable
- > Colour retention



NOW  
AVAILABLE AS  
STOCKLINE

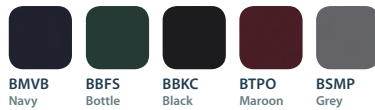
### STYLE

7401G\_ Children's sizes 4-16  
7401L\_ Adult's sizes 8-20

### FABRIC

Polyester / Viscose / Elastane Stretch Gaberdine - 250gsm

### COLOURS



## LEISURE PANTS

- > Popular bootleg style pant with elastic waist
- > Comfortable everyday pant
- > Made from breathable Cotton & a touch of Elastane



### STYLE

7300G\_ Children's sizes 4-18

### FABRIC

Cotton / Elastane - 270gsm

### COLOURS





# GIRL'S PANTS

## TAILORED BOOTLEG PANTS

- > Tailored & comfortable for a smart & flattering look
- > Premium stretch Gaberdine fabric
- > Colour fasted to last



Double Button



Hip Pocket



Bootleg Cut



Premium Stretch Gaberdine



Hipster Style



Smart Looking

### STYLE

7400G\_ Children's sizes 4-16  
7400L\_ Adult's sizes 8-20

### FABRIC

Polyester / Viscose / Elastane  
Stretch Gaberdine - 250gsm

### COLOURS



BMVB  
Navy



BBFS  
Bottle



BBKC  
Black



BTPO  
Maroon



BSMP  
Grey



MIDFORD'S  
NUMBER 1  
SELLING  
GIRL'S  
PANTS

# GIRL'S SHORTS

## TAILORED SHORTS

- > Very fashionable, hipster style girl's shorts
- > Front shaped pockets & two back pockets
- > Double button front closure



Double Button



Hip Pocket



Shaped Front Pockets



Premium Stretch Gaberdine



COMFORT  
FIT &  
STYLE

### STYLE

7004G\_ Children's sizes 4-16  
\* Available in Navy only  
7004L\_ Adult's sizes 8-20

### FABRIC

Polyester / Viscose / Elastane  
Stretch Gaberdine - 250gsm

### COLOURS



BMVB\*  
Navy



BBKC  
Black





# SKIRTS



STYLE MTO\_7100G

## FEATURES & ADVANTAGES:

01

**Internal Extendable  
Back-Waistband**  
Adjustable fit

02

**Safety Pocket**  
Valuables storage

03

**Inverted Pleats**  
Easy movement

04

**Custom Fabric**  
Unique Style

Zoe 5037\_BWHT Girl's Long Sleeve Basic Blouse in White, MTO Tie, MTO Girl's Skirt, T898G\_BDKN Girl's Cotton Tights in Navy; Annika MTO Girl's Short Sleeve Blouse, 7100G\_BDBS Girl's Pleated Day Skirt in Navy, T900G\_BDKN Girl's Microfibre Tights in Navy.





# SKIRTS

## SKORTS & CULOTTES

Find your own perfect solution for a tailored girl's uniform by adding one of our stockline fabric culottes or skirts in your school colours.

Alternatively choose from one of our many check, stripe or tartan fabrics.

### PLEATED DAY SKIRT

- > Girl's pleated Gaberdine skirt with adjustable back
- > Safety pocket on right hip
- > Inverted pleats on front & back



Internal  
Extendable  
Waistband



MTO Fabric  
Available



STYLE

7100G\_ Children's sizes 4-22

FABRIC

Polyester / Viscose Gaberdine - 260gsm

Teflon  
Fabric Protector

COLOURS



BDBS  
Navy

## GABERDINE CULOTTES

- > Classic style culottes
- > Elastic back & pleated front
- > Easy to wear all year round



**STYLE** 7200GG\_ Children's sizes 4-22

**FABRIC** Polyester / Viscose Gaberdine - 260gsm

Teflon  
Fabric Protector

**COLOURS**



**BMOI**  
Navy

## SKORT

- > Combines the look of a skirt with the comfort of shorts
- > Made from premium quality Gaberdine
- > Easy to care for & perfect for everyday wear



**STYLE** 7000G\_ Children's sizes 4-22

**FABRIC** Polyester / Viscose Gaberdine - 260gsm

Teflon  
Fabric Protector

**COLOURS**



**BDBS**  
Navy



**BBFS**  
Bottle



**BNGY**  
Mid Grey





# DRESSES

## PINAFORES, TUNICS & KILTS



STYLE MTO\_D0711

### FEATURES & ADVANTAGES:

**01**  
**Peter Pan Collar**  
Feminine design

**02**  
**Inverted Pleats**  
Flexible movement

**03**  
**4cm Hem Allowance**  
Extra length

**04**  
**Safety Pocket**  
Valuables storage

**05**  
**All Internal Seams Safety Stitched**  
Extra strength

**Annika** MTO Ivanhoe Grammar Summer Dress, SK01P3\_BWHT School Anklet Socks in White; **Tiana** MTO Ivanhoe Grammar Summer Dress, SK01P3\_BWHT School Anklet Socks in White; **Jorja** MTO Ivanhoe Grammar Summer Dress, SK01P3\_BWHT School Anklet Socks in White.





# MTO DRESSES

Every seam is graded to Australian schoolwear standards to ensure the best fit, quality & sizing.

All Midford dresses feature a generous hem & side seams – ensuring every student the perfect fit & comfort, all year round.

**PRICES ON APPLICATION:** Minimum quantities apply. For more information please contact your Territory Manager. Alternatively, call us toll-free on 1800 TEL MID (835 643) or email us at [info@midford.com.au](mailto:info@midford.com.au).

## MANDY SUMMER DRESS

- > Pleated summer dress
- > Contrasting Peter Pan collar & cuffs
- > Side tabs with button detail



STYLE MTO\_D0762

## ALISON SUMMER DRESS

- > Open neck flat collar
- > Concealed placket front
- > Action back



STYLE MTO\_D0763

## ROBYN SUMMER DRESS

- > Summer dress with Peter Pan collar
- > Matching tab tie & piping on collar & cuffs
- > Inverted pleats



STYLE MTO\_D0711

HUNDREDS OF FABRICS TO CHOOSE FROM

CONTACT MIDFORD FOR MORE INFORMATION ON AVAILABLE FABRICS & STYLES...



8036



8072



8056



8023



8027



8028



8006



8081



8040



8071



8064



8065



8109



8114



8120



8119



### ANNA SUMMER DRESS

- > Open neck collar summer dress
- > Contrasting collar & cuff
- > A-line shape for comfort



STYLE MTO\_D0818

### AMANDA SUMMER DRESS

- > Classic princess style summer dress
- > Front button placket, open neck & action back
- > Inverted centre front & back pleats



STYLE MTO\_D0654

### ROSE SUMMER DRESS

- > Drop waist summer dress
- > Matching Peter Pan collar, cuffs & buttons
- > Box pleats & button front placket



STYLE MTO\_D0777

### LUCY SUMMER DRESS

- > Princess style summer dress
- > Contrasting peaked collar & matching cuffs
- > Double front pleats & security zip pocket



STYLE MTO\_D0743



8009 8038 8011 8014 8050 8053 8079 8124 8047 8173 8207 8112 8213 8083 6012 8003





# MTO

## PINAFORES, TUNICS & KILTS

The smartest way to keep your students warm. Midford's winter Tunics & Pinafores look great & feel good too.

Take your pick from our styles or work with our expert team to create your own unique design.

### NATALIA WINTER TUNIC

- > A-line winter tunic
- > Button-up shoulder detail & darts to create a flattering look



STYLE MTO\_T0724

### LIZA WINTER TUNIC

- > Pleated drop waist style winter tunic
- > Centre back zipper



STYLE MTO\_T0752

### A WIDE VARIETY OF TARTANS, CHECKS & COLOURS TO CHOOSE FROM...



9010 9023 9023 9027 9056 9066 9008 7062 7079 7080 7072 7093 7096 7110 7116 7110

### CARLY WINTER TUNIC

- > V-neck princess style winter tunic
- > Button shoulder & front pleats
- > Back tab feature with button



STYLE MTO\_T0727

### TAMMY PINAFORE

- > Bib top style winter pinafore
- > Pleats & adjustable internal waistband



STYLE MTO\_P0728

### ELENA PINAFORE

- > Yoke top style winter pinafore
- > Full pleats from chest, belt loops & belt



STYLE MTO\_P0646

### KATIE KILT

- > Traditional style kilt
- > Button closure
- > Side tab belt features



STYLE MTO\_K0116

**CONTACT MIDFORD FOR MORE INFORMATION ON AVAILABLE FABRICS & STYLES...**

**PRICES ON APPLICATION:** Minimum quantities apply. For more information please contact your Territory Manager. Alternatively, call us toll-free on 1800 TEL MID (835 643) or email us at [info@midford.com.au](mailto:info@midford.com.au).



# FLEECIES



STYLE 25033

## FEATURES & ADVANTAGES:

01	02	03	04	05
V-neck	High Quality Fleece	All Internal Seams Safety Stitched	Set-In Sleeve	1x1 Knitted Rib
Easy fit	Pill resistant	Extra strength	Flexible movement	Shape stability

Charli 25037\_BDEU Zip Front Jacket in Royal, 8120LOC\_BLDE Short Sleeve Polo in Lemon, 29044L\_BDEU Tracksuit Pants in Royal; Ashton 25033\_BDEU V-neck Jumper in Royal, 8120LOC\_BLDE Short Sleeve Polo in Lemon, 25042B\_BDEU Straight Leg Tracksuit Pants in Royal.







# FLEECIES

## WARM KIDS ARE HAPPY KIDS.

Midford unisex tracksuits are made from high quality anti-pill fabric to look good all year round.

### ZIP FRONT TRACKSUIT JACKET

- > Unisex zip front tracksuit jacket with pockets
- > High quality, anti-pill fabric
- > Great alternative for everyday wear



STYLE 25037\_ Children's sizes 4-18

FABRIC Polyester / Cotton Fleece - 330gsm

COLOURS



### V-NECK TRACKSUIT JUMPER

- > Popular V-neck unisex jumper
- > Featuring set in sleeves with ribbed cuffs
- > Colour fast to last



STYLE 25033\_ Children's sizes 4-16  
25033M\_ Adult's sizes S-2XL

FABRIC Polyester / Cotton Fleece - 330gsm

COLOURS



## CREW NECK TRACKSUIT JUMPER

- > Classic fleecy Crew Neck jumper
- > Made from high quality, anti-pill fabric
- > Easy care



STYLE 25034\_ Children's sizes 4-16

FABRIC Polyester / Cotton Fleece - 330gsm

COLOURS



## STRAIGHT LEG TRACKSUIT PANT

- > Full elastic waist, internal draw cord, side pockets with zips & double stitched hems
- > Great fitting, straight leg tracksuit pant



STYLE 25042B\_ Children's sizes 4-22

FABRIC Polyester / Cotton Fleece - 330gsm

COLOURS



## TRACKSUIT PANTS

- > Comfortable & warm fleecy tracksuit pants
- > Unisex style
- > Double knee feature & double stitched pockets for extra durability



STYLE 29044L\_ Children's sizes 4-16

FABRIC Polyester / Cotton Fleece - 330gsm

COLOURS





# SPORTS WEAR



## FEATURES & ADVANTAGES:

- |                    |               |                      |                      |                              |                        |                    |
|--------------------|---------------|----------------------|----------------------|------------------------------|------------------------|--------------------|
| 01                 | 02            | 03                   | 04                   | 05                           | 06                     | 07                 |
| Funnel Neck Collar | Jersey Lining | Elastic Sleeve Cuffs | Concealed Zip Pocket | Twin Needle Top Stitched Hem | Single Top Stitch Seam | Peached Microfibre |
| Extra warmth       | Added warmth  | Closer fit           | Valuables storage    | Smooth hemline               | Stronger seams         | Softer feel        |

**Kahn** MTO Ivanhoe Grammar Short Sleeve Polo, MTO Ivanhoe Grammar Microfibre Track Pants, SK05P3\_BWHT Sport Socks in White; **Angus** MTO Ivanhoe Grammar Short Sleeve Polo, MTO Ivanhoe Grammar Microfibre Shorts, SK05P3\_BWHT Sport Socks in White.







# SPORTS WEAR

## MICROFIBRE JACKET

- > Very popular full zip front Microfibre jacket
- > Front pockets with zip closures & elasticised sleeve cuffs
- > Fully lined



### STYLE

0804B\_ Children's sizes 4-16  
 0804M\_ Adult's sizes S-2XL  
 \* Available in French Navy Only

### FABRIC

Polyester Microfibre - 120gsm  
 (Polyester / Cotton Lining - 170gsm)

### COLOURS



## MICROFIBRE SHORT

- > Popular unisex microfibre shorts
- > Full elastic waist & drawstring
- > Two-side pockets, right pocket with safety zip



### STYLE

0050B\_ Children's sizes 4-16  
 0050M\_ Adult's sizes XS-2XL  
 \* French Navy available up to size 3XL  
 \*\* Not available in Royal

### FABRIC

Polyester Microfibre - 120gsm

### COLOURS



## MICROFIBRE PANT

- > Straight leg tracksuit pants
- > Full elastic waist & drawstring
- > Two side pockets with zips



### STYLE

0805B\_ Children's sizes 4-16  
0805M\_ Adult's sizes S-2XL  
\* Available in French Navy & Black only

### FABRIC

Polyester Microfibre - 120gsm  
(Polyester / Cotton Lining - 170gsm)

### COLOURS



## SOFT SHELL JACKET

- > Wind proof and water resistant
- > Reflective piping with velcro adjustable cuffs
- > Warm and comfortable to wear



### STYLE

MSOFTS2\_ Children's sizes 8-22

### FABRIC

96% Polyester 4% Spandex

### COLOURS



## NYLON SHELL JACKET

- > Unisex jacket with elasticised cuff
- > Water resistant with reflective piping
- > Mesh lined with high collar & hidden hood



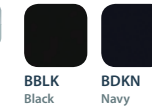
### STYLE

MSHELL2\_ Children's sizes 4-18

### FABRIC

100% Nylon

### COLOURS





# BODY ARMOR



## FEATURES & ADVANTAGES:

01

**Full Elastic Waistband**  
Comfort

02

**Mesh Back Yoke**  
Breathable

03

**All Seams With Twin Needle Top Stitch**  
Strength & durability

04

**Chamois Sides**  
Players grip

**Brad** MTO St. Joseph's College Training Tee, MTO St. Joseph's College P.E. Shorts, MTO St. Joseph's College Sports Cap, SK05P3\_BWHT Sport Socks in White; **Jacob** MTO The Scots College Training Tee, MTO The Scots College P.E. Shorts, MTO The Scots College Sports Cap, SK05P3\_BWHT Sport Socks in White.







# BODY ARMOR

Right result because good performance, price and practicality count. We use the latest in easy care and comfort technology.

Simply throw our sportswear in the washing machine and tumble dry for the next day.

**IT'S A WINNER EVERY TIME!**

## BASKETBALL SHORT

- > Loose fitting, reversible, unisex micromesh shorts
- > Great for basketball



### STYLE

600B\_ Children's sizes 4-16  
600M\_ Adult's sizes XS-2XL

### FABRIC

Polyester Micromesh - 100gsm  
(Polyester / Cotton Lining - 150gsm)

### COLOURS



BBKC  
Black

## RUGBY KNIT SHORT

- > Unisex rugby knit shorts
- > Safety zip pocket
- > Elastic waist with drawstring



### STYLE

5506V\_ Children's sizes 4-16  
5506LV\_ Adult's sizes XS-2XL  
\* Not Available in Royal & Bottle

### FABRIC

Polyester / Cotton Rugby Knit - 240gsm

### COLOURS



BNVB\*  
Royal



BBF5\*  
Bottle



BNSH  
Navy



BCTF  
Maroon



BBKC  
Black

## RUGBY PLAYING SHORT

- > Safety stitching on all seams for durability
- > Mesh back yoke for breathability
- > Chamois sides for players grip



BACK  
MESH YOKE

### STYLE

RSHB001M\_ Children's size 14 (Black)  
 RSBO01M\_ Children's sizes 8-14 (Ink Navy)  
 RSHM001M\_ Adult's sizes XS-3XL (Black)  
 RSM001M\_ Adult's sizes XS-3XL (Ink Navy)

### FABRIC

Main: 100% Polyester  
 Chamois: 100% Brushed Polyester  
 Mesh: 100% Polyester Mesh

### COLOURS



BPCT  
Ink Navy



BBLK  
Black

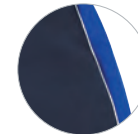
## MADE TO ORDER MICROFIBRE SHORT

- > Custom embroidery
- > Contrast side panel & piping
- > Custom school colours



### STYLE

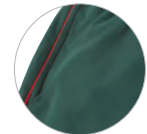
MTO\_MI01  
Add your schools name



### STYLE

MTO\_MI03  
Add crest  
or logo

MTO\_MI04  
Contrast  
side panel



### STYLE

MTO\_MI06  
Side piping

### STYLE

Available in Children's sizes 4-16  
 Adult's sizes S-2XL  
 Also available in Girl's fit with lower rise



# MTO

## BODY ARMOR BY MIDFORD

### DESIGN OPTIONS...

Choose from our designs, colours and fabrics to create the look you want for your team.

Organise your consultation today with your Territory Manager.

**PRICES ON APPLICATION:** For more information please contact your Territory Manager. Alternatively, call us toll-free on 1800 TEL MID (835 643) or email us at [info@midford.com.au](mailto:info@midford.com.au).



01  
Custom Zip  
Colours

02  
Contrast Side  
Panel

03  
Custom  
School  
Stripes

04  
Embroider  
Your School's  
Initials

05  
Elastic Waist  
Band

06  
Hidden Zip



07  
Custom Colour

08  
Raglan Sleeve

09  
Contrast Panel

10  
Contrast Side  
Piping

11  
Side Zip with  
Contrast Insert

12  
Full Zip  
to the Neck

13  
Wet Weather  
Jacket

14  
Add Your Logo  
or Crest





# SUBLIMATION



STYLE MTO\_PSS003

## FEATURES & ADVANTAGES:

01	02	03	04	05	06
Self Fabric Collar	Internal Seams Safety Stitched	Reinforced Seams	Absorbent Fabric	Custom Made Colours	140gsm Mesh Fabric
Design continuity	Extra Strength	Durability	Comfort	Dyed direct into the fabric	Light weight

**Jacob** MTO The Scots College Sublimated Basketball Singlet, MTO The Scots College Sublimated Basketball Shorts, SK05P3\_BWHT Sport Socks in White; **Charli** MTO King's Christian College Sublimated Polo, 0050B\_BBKI Microfibre Shorts in French Navy, SK05P3\_BWHT Sport Socks in White; **Brad** MTO Newington College Sublimated Soccer Jersey, MTO Newington College Soccer Shorts, MTO Newington College Soccer Socks; **Jorja** MTO Caloundra Christian College Sublimated Polo, MTO Caloundra Christian College Sublimated Shorts, SK05P3\_BWHT Sport Socks in White; **Zoe** MTO Kincoppal Rose Bay C2S Singlet, 0050B\_BBKI Microfibre Shorts in French Navy, SK05P3\_BWHT Sport Socks in White.





# DESIGN FROM CONCEPT TO FINISH

## DESIGN OPTIONS...

Choose from our designs, colours and fabrics to create the look you want for your team.

Organise your consultation today with your Territory Manager.

**PRICES ON APPLICATION:** For more information please contact your Territory Manager. Alternatively, call us toll-free on 1800 TEL MID (835 643) or email us at [info@midford.com.au](mailto:info@midford.com.au).

## WHAT IS SUBLIMATION?

Sublimation is the method of applying an image to fabric. Heat and pressure application bonds the sublimation dye colours into the fabric fibres.

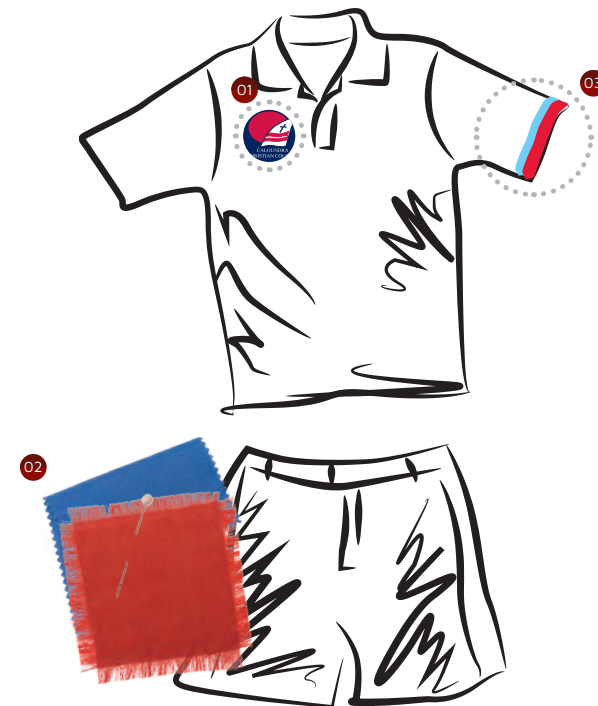
As the sublimation process actually dyes the garment, the colour is embedded "into" the fabric and not on top, which is the case with traditional screen printing methods.

This gives a much better feel to the garment.

### STEP 1

## THE IDEA

Organise a consultation with your Territory Manager to brainstorm ideas of the type of garment, style, colours, trims and school emblem.



01 Choose emblem placement

02 Match to your school's colours

03 Choose trims



STEP 2

## DESIGN

### STORYBOARD

Our design team will put together a Storyboard with a range to compliment your sportswear uniform.



STEP 3

## CREATE

### END RESULT

On approval from Storyboard, fabric is sourced and manufactured to produce the final garment.



# SUBLIMATION BODY ARMOR BY MIDFORD



You can choose from one of our many designs and change the colour to suit yourself, supply your own artwork or we can work in conjunction with you to create something special and unique.

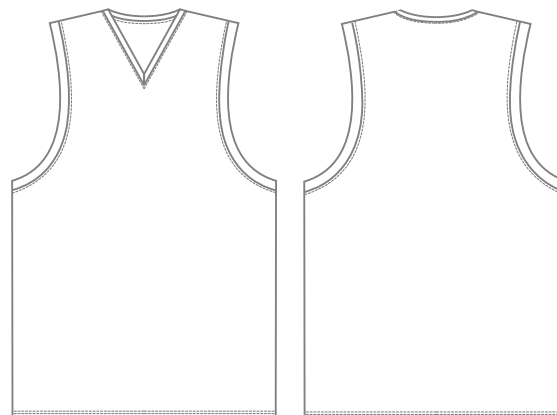
## POTENTIAL FABRIC OPTIONS

- 140gsm Mesh
- 150gsm Mesh
- 210gsm Mesh
- 230gsm Mesh
- 230gsm Mesh Waffle 815
- 130gsm Interlock
- 270gsm Interlock

## BASKETBALL

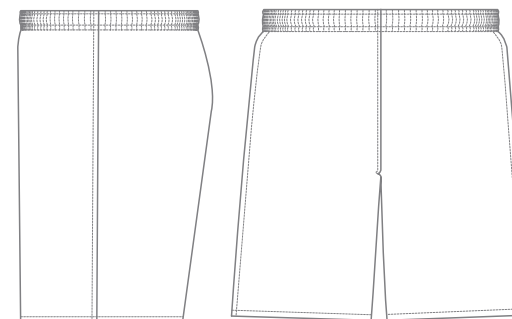
### BASKETBALL SINGLET

- > V-neck Style
- > Classic Basketball fit



### BASKETBALL SHORT

- > Full elastic waist
- > Longer leg length



### DESIGN IDEAS



STYLE BSV001



STYLE BSV002

### DESIGN IDEAS



STYLE BSP001



STYLE BSP002



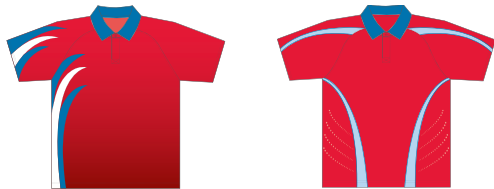
# RUGBY

## RUGBY RAGLAN JERSEY

- > Self fabric collar and placket
- > Raglan sleeve
- > Classic fit



### DESIGN IDEAS

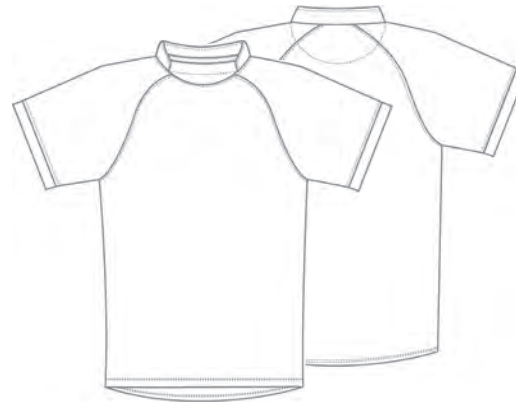


STYLE RJC001

STYLE RJC004

## RUGBY MANDARIN JERSEY

- > Mandarin sports collar
- > Fitted body
- > Curved hem



### DESIGN IDEAS



STYLE RJM002

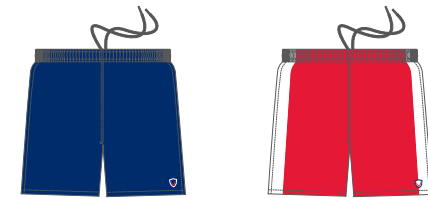
STYLE RJM003

## RUGBY SHORTS

- > Elastic waist with drawstring
- > Reinforced seams



### DESIGN IDEAS



STYLE RSP001

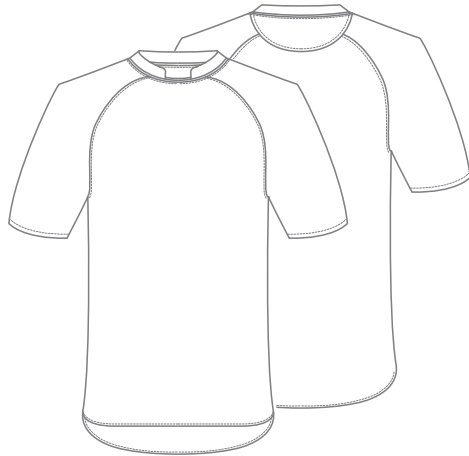
STYLE RSP002



# SOCCER

## SOCCER SPORTS COLLAR SHIRT

- > Sports collar
- > Raglan sleeve
- > Fitted body



### DESIGN IDEAS



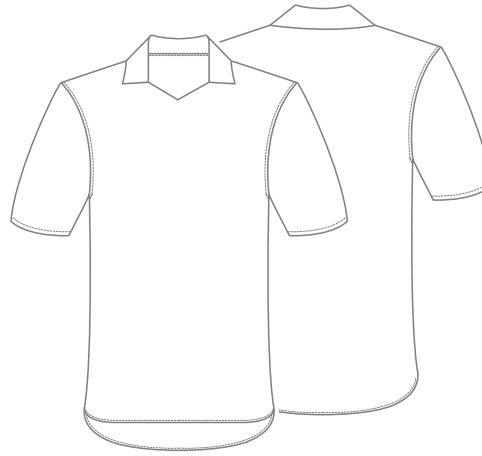
STYLE SJM002



STYLE SJM003

## SOCCER PEAKED COLLAR SHIRT

- > Self fabric peaked collar
- > Set in sleeve
- > Curved hem



### DESIGN IDEAS



STYLE SJP001



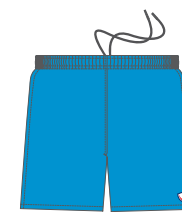
STYLE SJP004

## SOCCER SHORT

- > Full elastic waist with drawstring
- > Shorter length



### DESIGN IDEAS



STYLE SSP001

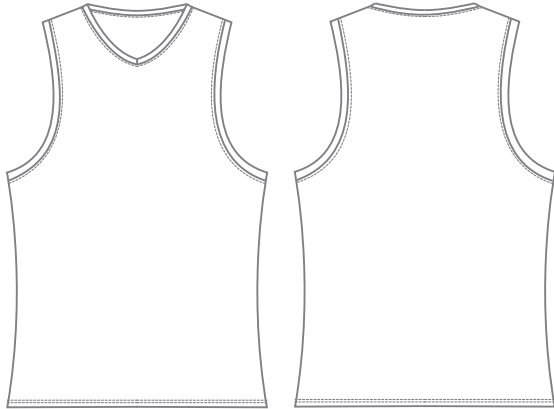


STYLE SSP002

# AFL

## AFL JERSEY

- > Curved V-neck
- > Classic AFL fit



## DESIGN IDEAS



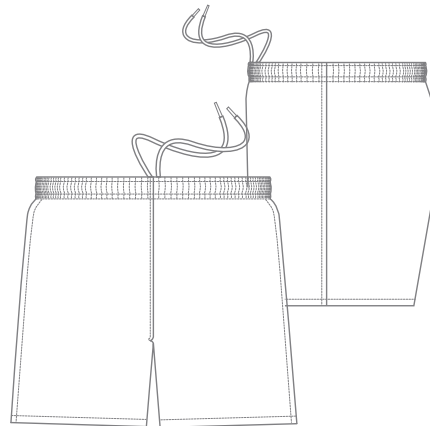
STYLE AFJ001



STYLE AFJ002

## AFL SHORTS

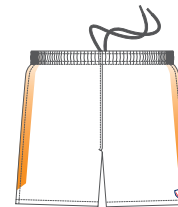
- > Elastic waist with drawstring
- > Shorter length



## DESIGN IDEAS



STYLE AFS001



STYLE AFS002

# YOU CAN BE THE DESIGNER!



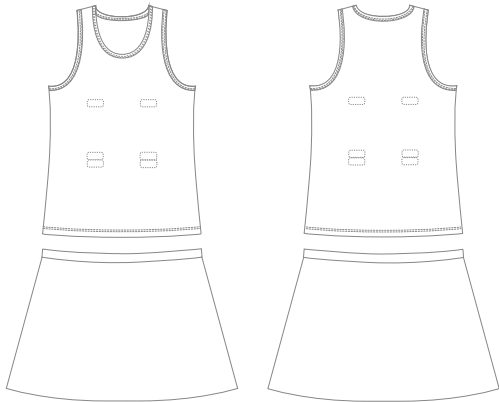
Our design team can create a design to suit your team or school colours.

If you have a logo or design in mind, contact your Territory Manager to discuss requirements.

# NETBALL

## NETBALL OUTFIT

- > Scoop neck
- > Fitted body
- > Full elastic waist



### DESIGN IDEAS



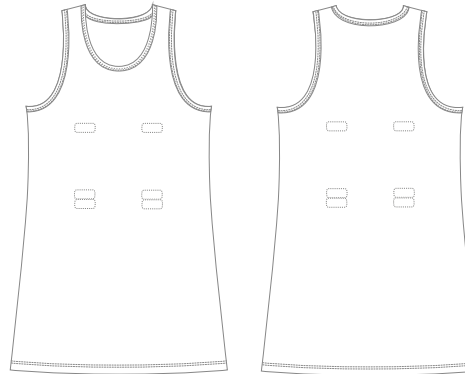
STYLE NBS001

STYLE NBS002

STYLE BIB01

## NETBALL DRESS

- > Scoop neck
- > A-line dress
- > Full back



### DESIGN IDEAS



STYLE NBD001

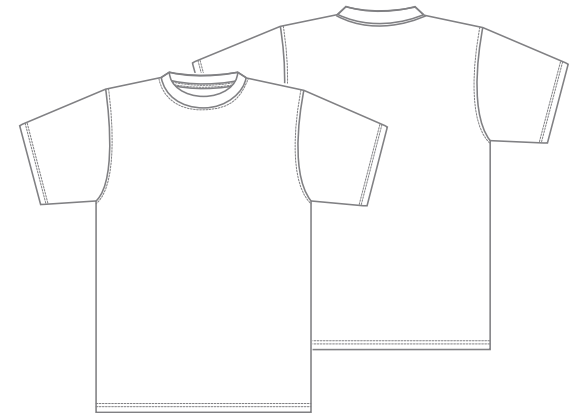
STYLE NBD002

STYLE BIB01

# BASICS

## TRAINING T-SHIRT

- > Crew neck self fabric collar
- > Classic fit



### DESIGN IDEAS

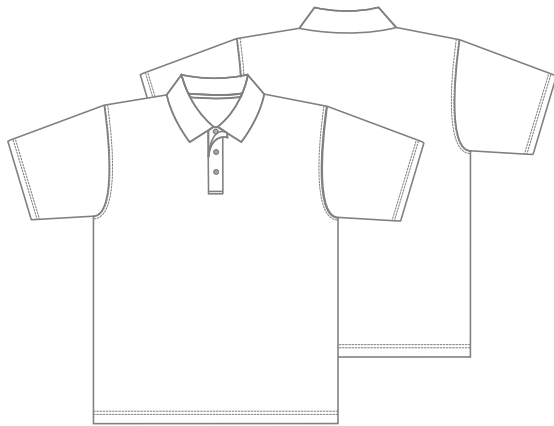


STYLE CTN001

STYLE CTN002

### SET-IN SLEEVE POLO

- > Set in sleeve
- > Self fabric collar



#### DESIGN IDEAS

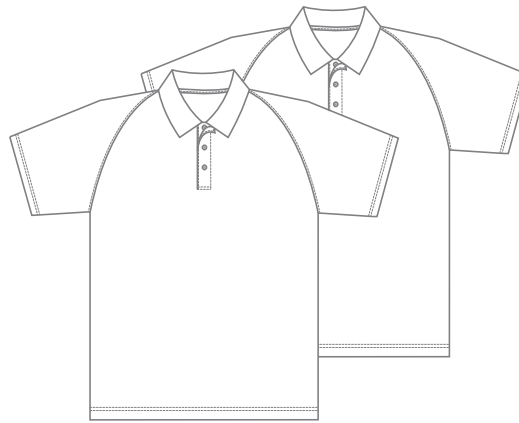


STYLE PSS001

STYLE PSS002

### RAGLAN POLO

- > Raglan sleeve
- > Self fabric collar



#### DESIGN IDEAS

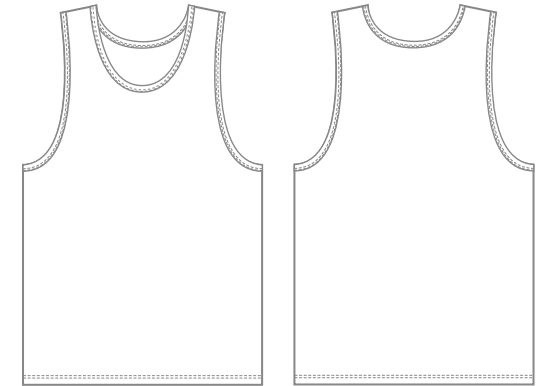


STYLE PSR001

STYLE PSR002

### BASIC SINGLET

- > Crew neck
- > Loose fit



#### DESIGN IDEAS



STYLE BSS001

STYLE BSS002





# ACCESSORIES



STYLE HT003



STYLE PTIE46

STYLE MTO\_SK01P3

## FEATURES & ADVANTAGES:

01 Poly/Viscose Fabric Breathable	02 Quality Eyelets Air-flow	03 Custom Colours Tailored	04 100% Polyester Hard wearing & durable	05 Inner Lining Holds shape	06 Identity Label Personalise	07 Continuous Internal Stitching Strength & durability
08 Wide Brim Sun protection	09 Reinforced Stitching Strength & durability	10 Adjustable Toggle Perfect fit	11 Dense Knitted Weave Thicker & Warmer	12 Reinforced Toe & Heal Strength	13 Cotton Blend Comfort	

Jorja 8120LOC\_BWHT Short Sleeve Polo in White, 7200GG\_BNGY Girl's Gaberdine Culottes in Grey, SK01P3\_BWHT School Ankle Socks in White, HT002\_BDKN Slouch Hat in Navy; Kai MTO The Scots College ELC Short Sleeve Polo, MTO The Scots College ELC Shorts, MTO The Scots College Boy's Wool Cap, SK05P3\_BWHT Sport Socks in White; Charli 5041\_BWHT Girl's Long Sleeve Peter Pan Blouse in White, MTO Girl's Tab Tie, 7200GG\_BMOI Girl's Gaberdine Culottes in Navy, SK01P3\_BWHT School Ankle Socks in White, MTO Girl's Boater.





# SOCKS & TIGHTS

Midford socks are made from the highest quality yarn. Our socks are soft to touch, look good and are most importantly, comfortable. Choose one of our stockline styles or customise your own style in your school's colours.



ALL MIDFORD SOCKS ARE NOW SOLD AS 3 PACK!

**PRICES ON APPLICATION:** For more information please contact your Territory Manager. Alternatively, call us toll-free on 1800 TEL MID (835 643) or email us at [info@midford.com.au](mailto:info@midford.com.au).

## SCHOOL ANKLET SOCKS 3 PACK

- > Popular unisex school anklet (RIGHT)
- > Made to Order striped anklet (LEFT)

### STYLE

Made to Order Option (LEFT)  
SKO1P3\_ (RIGHT)  
Children's sizes 5-8, 9-12, 13-3  
Adult's sizes 2-8, 7-11, 11-14



### FABRIC

Cotton Blend

### COLOURS



BWHT White    BDKN Navy    BBLK Black    BNGY Grey    BBYD Saxe Blue

SOLD AS 3 PACK

## KNEE HIGH SOCKS 3 PACK

- > Classic unisex knee high socks (RIGHT)
- > Made to Order striped Knee High School Sock (LEFT)

### STYLE

Made to Order Option (LEFT)  
SKO3P3\_ (RIGHT)  
Children's sizes 5-8, 9-12, 13-3  
Adult's sizes 2-8, 7-11, 11-14



### FABRIC

Cotton Blend

### COLOURS



BWHT White    BDKN Navy    BNGY Grey

SOLD AS 3 PACK

## UP & DOWNERS SOCKS 3 PACK

- > Versatile school socks
- > Can be worn up, down or folded over neatly

### STYLE

SKO2P3  
Children's sizes 5-8, 9-12, 13-3  
Adult's sizes 2-8, 7-11, 11-14



### FABRIC

Cotton Blend

### COLOURS



BWHT White    BDKN Navy    BBFS Bottle    BNGY Grey    BBYD Saxe Blue

SOLD AS 3 PACK

## STRAIGHT UP KNEE HIGH SOCKS 3 PACK

- > Latest trend in socks for cool school kids
- > Super soft & made to last

### STYLE

SKO9P3\_  
Children's sizes 9-12, 13-3  
Adult's sizes 2-8



### FABRIC

Cotton Blend

### COLOURS



BWHT White

SOLD AS 3 PACK

### SPORTS 3/4 CREW SOCKS 3 PACK

- > Quarter length sports sock

#### STYLE

SK05P3\_  
Children's sizes 5-8, 9-12, 13-3  
Adult's sizes 2-8, 7-11, 11-14

#### FABRIC

Cotton Blend

#### COLOURS



BWHT  
White



### SPORTS ANKLET SOCKS 3 PACK

- > Low-cut unisex anklet
- > Great for sport & everyday wear

#### STYLE

SK04P3\_  
Children's sizes 5-8, 9-12, 13-3  
Adult's sizes 2-8, 7-11, 11-14

#### FABRIC

Cotton Blend

#### COLOURS



BWHT  
White



### MADE TO ORDER STRIPED SPORTS SOCKS

- > Crew length striped sports sock
- > Custom made stripe in school colours

#### STYLE

Made to Order Option SK06P3\_  
Children's sizes 5-8, 9-12, 13-3  
Adult's sizes 2-8, 7-11, 11-14

#### FABRIC

Cotton / Nylon / Elastane



### MICROFIBRE TIGHTS

- > Soft feel with Cotton gusset
- > Microfibre 60 denier opaque tights

#### STYLE

T900G\_  
Children's sizes 3-5, 6-9, 10-12  
T900L\_  
Adult's sizes Small, Average, Tall, X-Tall

#### FABRIC

Nylon / Elastane

#### COLOURS



BDKN  
Navy

BNGY  
Grey



### MADE TO ORDER FOOTBALL SOCKS

- > Custom Made to Order football sock in your school's colours
- > Cushioned foot for comfort

#### STYLE

Made to Order Option SK07\_  
Children's sizes 5-8, 9-12, 13-3  
Adult's sizes 2-8, 7-11, 11-14

#### FABRIC

Cotton Blend



### COTTON TIGHTS

- > Super soft Cotton blend
- > All flat seams with comfort waistband & shaped gusset

#### STYLE

T898G\_  
Children's sizes 3-5, 6-9, 10-12, 12-14

#### FABRIC

Cotton Blend

#### COLOURS



BDKN  
Navy

BPLK  
School Grey





# HATS

OVER 60 GREAT STYLES TO CHOOSE FROM! TALK TO US ABOUT YOUR SCHOOL'S SPECIAL CAP AND HAT NEEDS

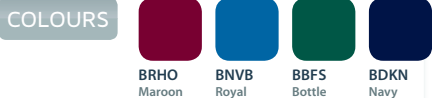
## BASEBALL CAP

- > Six panel unisex baseball cap with cross-over velcro
- > Perfect for sport & everyday wear
- > Sunsmart UPF50+



STYLE HT001\_ One Size Fits All

FABRIC Polyester / Viscose



## BUCKET HAT

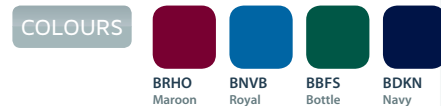
- > Elasticised toggle on brim
- > Unisex style
- > Sunsmart UPF50+



(S: 56cm M: 58cm L: 60cm)

STYLE HT003\_ Sizes S-L

FABRIC Polyester / Viscose



## LEGIONNAIRE HAT

- > Legionnaire cap with ponytail back fastener
- > Wide flaps to protect the neck & ears from the sun



STYLE HT004\_ One Size Fits All

FABRIC Polyester / Cotton



## SLOUCH HAT

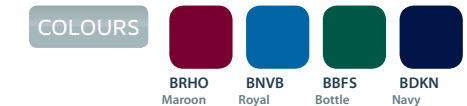
- > Wide full brimmed hat
- > Elasticised toggle on brim
- > Provides maximum sun protection
- > Sunsmart UPF50+



(S: 56cm M: 58cm L: 60cm)

STYLE HT002\_ Sizes S-L

FABRIC Polyester / Viscose





# TIES

## TIE

- > Three versatile lengths - 46", 50" & 54"
- > Available in six great colours
- > Hard wearing & durable, 100% Polyester



### LEARN THE HALF-WINDSOR KNOT

- 01 Start with the wide end of tie on your right, extending a foot below the narrow end
- 02 Cross wide end over narrow and turn back underneath
- 03 Bring up and turn down through loops
- 04 Pass wide end around front, from left to right...
- 05 then up through loop...
- 06 ...and down through the knot in front. Tighten carefully and draw up to collar



Red



Maroon



Bottle



Royal



Navy



Black

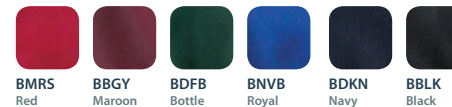
#### STYLE

PTIE46\_ Tie Length 46"  
 PTIE50\_ Tie Length 50"  
 PTIE54\_ Tie Length 54"

#### FABRIC

100% Polyester

#### COLOURS





# SCHOOL BAGS



STYLE MB03

## FEATURES & ADVANTAGES:

01	02	03	04	05	06	07	08	09	10
Reflective Trim	Fully Padded Back Panel	Durable Zippers	Generous Front Pocket	Side Compression Straps	Moulded Feet	Wide Straps	S-Contour	High Density Mesh Undersides	2" Webbing Waist Strap
Safety precaution	Alleviate pressure	High quality	Easy storage	Adjustable fit	Hard wearing & durable	Weight distribution	Ergonomic shape	Softer feel	Stabilisation

**Bianca** 5037\_BWHT Girl's long Sleeve Basic Blouse in White, MTO Tie, 7400G\_BMVB Girl's Tailored Bootleg Pants in Navy; **Kahn** MTO The Scots College Blazer, 1006C\_BWHT Boy's Long Sleeve Classic Shirt in White, MTO The Scots College Tie, MTO The Scots College Pants, MTO The Scots College Socks, MB03\_BDKN Campus Bag with Crest.





# SCHOOL BAGS

## MIDFORD DESIGNED A RANGE OF BACKPACKS WITH CHILDREN IN MIND

They feature shoulder straps with ergonomic curves in a variety of sizes and increased neck room. Offering the best comfort & support for your child.

## CUSTOM COLOURS & LOGO PRINTING

Talk to us about custom colours. Midford's bag range is available in a wide range of colours.

### FREE PRINT-SETUP

Midford also offers FREE print-setup on all school crest/logo's. Our design team can help you create or adapt your school crest/logo to suit each schoolbag. Personalising your schoolbag, couldn't be any easier!

## SCHOOL BAGS DESIGNED WITH CHILDREN IN MIND

### ERGONOMIC DESIGN

Most backpacks are simply carrying cases with straps. They are not designed with health in mind. Midford developed a range that is lightweight, firm and supportive. Each style was researched for it's purpose and use and in-turn developed straps that were either adjustable, padded or added compression to re-align the weight and stabilise the load.

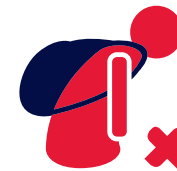
**"OUR RANGE IS AIMED TO MINIMISE BACK & NECK PAIN AND ANY STRAIN ASSOCIATED TO THE SPINE."**

We understand that no child grows at a 'perfectly' steady rate and have factored in the adjustable and padded shoulder straps as your child grows taller.

Hence adjusting the schoolbag to sit closer to the back, properly on the shoulders and held snugly around the waist. Perfect posture, happy student!

## BACK CARE TIPS

In an incorrectly packed bag the weight sits at the bottom of the bag away from the body. This can result in straps digging into shoulders, back and neck. Shoulders bear all the weight and a strained posture leans forward to compensate for the load. The top of the pack should sit no higher than shoulder height. The lowest point of bag should sit no lower than the hollow point of the back.



INCORRECT



CORRECT

FEATURE	ADVANTAGE
Firm, supportive back with padding	For extra support and comfort
Adjustable and padded shoulder straps	Customise straps for every shape and size
Adjustable waist strap/belt	Weight on hips/pelvis not shoulders/spine
Chest strap	Stabilises the load
Compression straps	Aligns the weight closer to the back
Multiple pockets	To distribute weight more evenly

# DESIGN FEATURES

## PRODUCT DESIGN

Each product we create starts with specific goals and objectives that achieve technically appropriate performance for a specific end use. We don't do something because we can, rather we do it because it needs to be done. We have developed stringent measures and testing that assists us in maximising performance and durability while minimising weight.

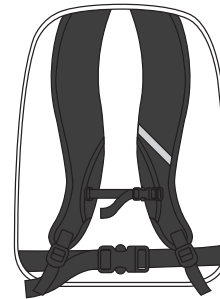
### 01 S-CONTOUR



Designed with high-quality, low compression EVA foam that follows the body's natural contours.

- > Fully adjustable universal fit for boys & girls
- > Ergonomic shape to shift the weight off the neck and back
- > Wide straps for greater weight distribution across the shoulders
- > Low compression, high quality EVA foam padding to spread the load and alleviate any potential pressure points
- > Mesh underside to provide a softer feel while wicking moisture & excess heat.

### 02 ABSORBCORE



Fitting system centred around low compression, high quality EVA foam. Adjusts the load appropriately to follow the body's natural contours and improve posture.

- > Fully adjustable universal fit for boys & girls
- > Ergonomic S-Contoured shoulder straps
- > Wide waist strap, dramatically directs the load away from the shoulders on to the much stronger hip muscles
- > Wide straps for greater weight distribution across the shoulders and hips
- > Adjustable shock strap across the chest to secure the shoulder straps and prevent slippage and shifting.

### 03 AEROFLOW



Protection that cools, comforts and supports the back.

- > Lightweight highly breathable cushioned back panel
- > Made from low compression high quality EVA foam
- > Engineered with circulation grooves to increase ventilation and airflow
- > Protects the back from objects in the pack
- > Universal fit for boys and girls
- > Mesh underside to provide a softer feel while wicking moisture & excess heat.





### CAMPUS TWO COMPARTMENT

3 YEAR WARRANTY

- > Generous front pocket
- > Large interior divider / pocket in main compartment
- > Soft touch breathable high-density mesh undersides
- > Hard wearing base



STYLE MB03

SIZE	DIMENSIONS	CAPACITY
XS	H40 x W30 x D20cm	26.5 litres
S	H44 x W32 x D20cm	30.5 litres
M	H48 x W33 x D22cm	34.5 litres
L	H53 x W35 x D24cm	44.5 litres

COLOURS



### ACADEMY TWO COMPARTMENT

3 YEAR WARRANTY

- > Direct access felt lined audio pocket
- > Internal zipper pouch
- > Internal label with name plate
- > Soft touch breathable mesh underside



STYLE MB13

SIZE	DIMENSIONS	CAPACITY
M	H45 x W32 x D20cm	30.5 litres
L	H49 x W34 x D20cm	33.5 litres

COLOURS



### LOCKER TRADITIONAL JUNIOR

3 YEAR WARRANTY

- > Top & side stash pockets
- > Sturdy adjustable divider in main compartment
- > Reflective trim on front & back
- > Contoured padded & adjustable S-curve shoulder straps



STYLE MB05

SIZE	DIMENSIONS	CAPACITY
M	H34 x W30 x D16cm	16.5 litres
L	H40 x W30 x D19cm	24 litres

COLOURS



## SACKPACK SCHOOL SACK

1 YEAR WARRANTY

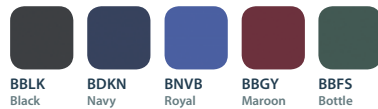
- > Protective PVC piping
- > YKKTM zippers with black nickel pullers
- > Moulded ID tag
- > Lightweight construction



STYLE MB08

SIZE	DIMENSIONS	CAPACITY
M	H53 x W29 x D20cm	31 litres

COLOURS



BBLK  
Black

BDKN  
Navy

BNVB  
Royal

BBGY  
Maroon

BBFS  
Bottle

## LAPTOP BAG

2 YEAR WARRANTY

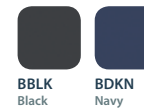
- > Removable shoulder strap - use as sleeve or carry bag
- > Pockets on back and velcro front pocket with organiser
- > Padded compartment holds up to 16" laptop



STYLE MB21

SIZE	DIMENSIONS
One size	H30 x W40 x D5cm

COLOURS



BBLK  
Black

BDKN  
Navy



## IPAD SLEEVE

2 YEAR WARRANTY

- > Front zippered compartment
- > Extra handle for easy carrying & removal
- > Nylon trim for extra support
- > Internal name label



STYLE MB22

SIZE	DIMENSIONS
One size	H21 x W29 x D2.5cm

COLOURS

BBLK  
Black

## RUNNER TEAM BAG

1 YEAR WARRANTY

- > Side pockets, one with vented mesh
- > Self material handle with comfort wrap
- > Easy access zip pullers with webbing ties
- > Internal zipper pouch



STYLE MB07

SIZE	DIMENSIONS	CAPACITY
M	H50 x W25 x D25cm	32 litres

COLOURS

BBLK  
BlackBDKN  
NavyBNVB  
RoyalBBGY  
MaroonBBFS  
BottleALL ROUNDER  
SPORTS BAG

1 YEAR WARRANTY

- > Multiple YKKTM zippered pockets
- > Removable & adjustable shoulder strap
- > Padded handle with comfort wrap
- > Valuables pocket on top opening



STYLE MB16

SIZE	DIMENSIONS	CAPACITY
L	H61 x W26 x D31cm	49 litres

COLOURS

BBLK  
BlackBDKN  
NavyBNVB  
RoyalBBGY  
MaroonBBFS  
Bottle

# HOW TO PACK YOUR MIDFORD SCHOOL BAG CORRECTLY



01  
Heavy items to the back, closest to your spine



02  
Pack the lightest weighted objects to the front



03  
Use the shoulders and chest straps to stabilise load and posture



04  
Minimise load and carry what's necessary for the day

# SERVICES & RETURN POLICIES

## CUSTOMER SUPPORT

Midford has an established network of Territory Managers and a dedicated Customer Service team. We pride ourselves on exceptional service & sound advice, so give us a call; we would love to help you.

## MINIMUM ORDERS

Minimum order value is \$150. Orders under the minimum order value will incur a surcharge of \$15. Minimums may also apply to selected styles. Midford shirts are only available in packs of 6 per colour, per size. When ordering, please order shirts in multiples of 6 only. Please note, orders in multiples less than 6, will be round up to the nearest multiple. A minimum order of 10 units per style/colour applies to Schoolbag orders, and all orders must be placed in multiples of 5. Orders in multiples less than 5, will be round up.

## STOCK AVAILABILITY

Although we try to do our best, we cannot guarantee that we will have all items in stock permanently. Due to unforeseen demand we may be out of items from time to time. If an item is out of stock we will advise you of any shortages at time of order placed, the items on back order will be forwarded to you separately.

## QUALITY GUARANTEE

Since 1946, all Midford garments have been sourced, manufactured and tested to the highest Australian Standards to ensure consistency of product & workmanship. At Midford we know that with everything school kids get up to, their uniform needs to be made to last. We ensure the highest standards are met so that we can deliver the best product to you.

We appreciate hearing from our customers.  
Please call: 1800 TEL MID (835 643)  
Fax: 1800 FAX MID (329 643)  
Email: info@midford.com.au

## SCHOOLBAG WARRANTY PROCEDURE

Call our customer service team on 1800 TEL MID to report your claim. Our friendly team will assess the claim and discuss any repairs/replacements.

## FREE DELIVERY AUSTRALIA WIDE

No matter where you are, we offer fast, FREE delivery direct to your door, anywhere in Australia for orders over \$150. Any requested express or guaranteed service will incur a freight charge.

## RETURNING PRODUCT

Garments must be returned within 7 days from invoice date, unworn, unwashed & with tags. Goods will only be accepted if they are in their original condition, free of any markings and damage. In this case, the customer will pay the return freight to the Midford warehouse in Sydney. For all customer initiated returns, a 10% handling fee will incur.

## WE WILL NOT ACCEPT THE RETURN OF GOODS IF:

- > Goods are damaged in the washing machine or dryer where the care instructions have not been followed correctly.
- > Goods have suffered from normal wear & tear, accident or mishandling.
- > Goods have been shop soiled or have been discoloured due to lengthy periods of time in the store.
- > Goods are discontinued styles.
- > Goods are indent or Made To Order.
- > You change your mind or order the wrong style, colour or quantity.

## THE COMPANY WILL CONSIDER CLAIMS FOR:

- > Goods that are faulty or defective as a result of faulty workmanship or materials.
- > Short delivery claims notified to Midford Head Office within 7 days of invoice.

Original invoice number must be supplied before claim can proceed.

The company will accept freight charges on returned goods provided the return has been duly authorised by a company representative and provided the goods are returned via the carrier nominated by the company.

The only company representatives who can authorise a Request for Credit are members of the Midford Head Office in Sydney. A Returns Authorisation Number (R.A.N.) will be issued.

Goods sent without an R.A.N. will be returned to the customer at their cost.

SINCE 1946  
**midford**

A Division of Gazal Corporation

Midford is a division of Gazal Apparel Pty Limited, one of Australia's largest clothing companies. Located just 10 minutes from Sydney International Airport, the 25,000 square meter facility is home to some of Australia's much loved brands...

BRACKS®, TRENT NATHAN®, BISLEY®, VAN HEUSEN®, CALVIN KLEIN®, HOLD ME TIGHT SHAPEWEAR®, BODY NANCY GANZ®, PARAMOUNT®, SPANX®, and of course, MIDFORD®.

## DISCLAIMER

The information in this catalogue has been published by Gazal Apparel Pty. Ltd. t/a Midford. While every effort has been made to capture the true likeness of colour, the products and images in this catalogue are for illustrative purposes only.

Products are subject to availability. No part of this brochure may be reproduced without the written consent of Midford. All prices stated are wholesale (exclusive of GST) and are subject to change at the discretion of Midford.

## COPYRIGHT

All catalogue design, text, graphics and the selection and arrangement of them are Copyright © 2013-2015 Midford. All rights, save as expressly granted, are reserved.

## TRADEMARKS

This catalogue contains registered and unregistered trademarks belonging to Midford. The registered trademarks include graphics, logos, phrases and icons contained in this catalogue. No rights are granted in respect of any of the above trademarks.

## ACKNOWLEDGEMENT

Designed by Airborne Agency





# SIZE GUIDE

The following guide has been put together to help you and your customers select the right size. The Midford size guide should be used as just that – a guide. Please be aware that the below measurements indicate the size of the child, not the garment. Garments will vary according to the size and fit of the particular garment. If you have a query relating to the size of a certain style, simply call our Customer Service team who have been well trained on our sizing in general and on individual garments in particular.

**MALE (CM)**

<b>CHILDREN'S SIZES</b>	<b>SIZE</b>	<b>4</b>	<b>5</b>	<b>6</b>	<b>7</b>	<b>8</b>	<b>10</b>	<b>12</b>	<b>14</b>	<b>16</b>	<b>18</b>	<b>20</b>	<b>22</b>	<b>24</b>	<b>26</b>	<b>28</b>	<b>30</b>	<b>32</b>	<b>34</b>
	to fit waist	56	57	58	59	60	64	68	72	76	80								
	to fit height	108	115	120	125	130	140	150	160	170	180								
	to fit chest	60	62	64	66	68	72	76	80	86	92	98	104	110	116	122	128	134	140
	to fit neck	30	30.5	31	31.5	32	34	35	36	38	40	41	42	43	44	45	46	47	48
<b>UPPER GARMENT ADULT'S SIZES</b>		<b>SIZE</b>	<b>XS</b>	<b>S</b>	<b>M</b>	<b>L</b>	<b>XL</b>	<b>2XL</b>	<b>3XL</b>	<b>4XL</b>									
	to fit waist	77	82	87	92	97	102	107	112										
	to fit chest	85	90	95	100	105	110	115	120										
<b>LOWER GARMENT ADULT'S SIZES</b>		<b>SIZE</b>	<b>3</b>	<b>4</b>	<b>5</b>	<b>6</b>	<b>7</b>	<b>8</b>	<b>9</b>	<b>10</b>	<b>11</b>	<b>12</b>							
	to fit waist	77	82	87	92	97	102	107	112	117	122								

**FEMALE (CM)**

<b>CHILDREN'S SIZES</b>	<b>SIZE</b>	<b>4</b>	<b>5</b>	<b>6</b>	<b>8</b>	<b>10</b>	<b>12</b>	<b>14</b>	<b>16</b>	<b>18</b>	<b>20</b>	<b>22</b>	<b>24</b>	<b>26</b>
	to fit waist	56	57	58	60	62	64	66	70	75	80	85	90	95
	to fit height	108	115	120	130	140	150	160	170	180				
	to fit bust	60	62	64	68	74	80	86	90	95	100	105	110	115
	to fit neck	30	31	32	34	36	37	39	41	42	43	44	45	46
<b>ADULT'S SIZES</b>		<b>SIZE</b>	<b>8</b>	<b>10</b>	<b>12</b>	<b>14</b>	<b>16</b>	<b>18</b>	<b>20</b>	<b>22</b>	<b>24</b>	<b>26</b>		
	to fit waist	65	70	75	80	85	90	95	100	105	110			
	to fit hips	80	85	90	95	100	105	110	115	120	125			

**UNISEX (CM)**

<b>CHILDREN'S SIZES</b>	<b>SIZE</b>	<b>4</b>	<b>6</b>	<b>8</b>	<b>10</b>	<b>12</b>	<b>14</b>	<b>16</b>	<b>18</b>	<b>20</b>	<b>22</b>
	to fit waist	56	58	60	64	68	72	76	80	85	90
	to fit height	108	120	130	140	150	160	170	180	190	200
	to fit chest	60	64	68	72	76	80	86	92	98	104
<b>ADULT'S SIZES</b>		<b>SIZE</b>	<b>S</b>	<b>M</b>	<b>L</b>	<b>XL</b>	<b>2XL</b>	<b>3XL</b>	<b>4XL</b>	<b>5XL</b>	<b>6XL</b>
	to fit waist	82	87	92	97	102	107	112	117	122	
	to fit chest	90	95	100	105	110	115	120	125	130	

# GET THE RIGHT FIT

Choosing the right size is easy with Midford – you can check out our easy fit guide or ask your Territory Manager to make sure you get the right size every time!

## NECK

Measure around the neck where the top of the shirt collar would sit - leaving room for comfort.

## CHEST / BUST

Standing naturally, measure under the arms around the fullest part of the chest & shoulder blades.

## WAIST

Measure around the natural waistline.

## HIPS

Measure around the fullest part of the bottom.

## HEIGHT

Bare feet, together and flat on the floor, measure from the top of the head to the ground.



## HOW TO ORDER

### EMAIL

[orders@midford.com.au](mailto:orders@midford.com.au)

### ONLINE

[www.midford.com.au](http://www.midford.com.au)

### FAX TOLL FREE

1800 FAX MID (329 643)

Contact your Territory Manager below for any Made to Order, Extra Options or Special Requirements

#### NSW Metro

North / East	0410 044 413
South	0420 858 110
West	0410 082 885

#### NSW Regional

Newcastle & Central Coast	0410 044 546
NSW Country West	0410 002 401
South Coast & Southern Highlands	0420 858 110
ACT	0420 858 110
SA	0420 923 830
VIC	0417 273 826

#### QLD

Brisbane North	0410 635 195
Brisbane South, Gold Coast, Cairns, Townsville	0458 024 882

WA	0448 435 923
----	--------------

TAS	0410 044 413
-----	--------------

NT	0410 635 195
----	--------------

**SIZE GUIDE** - Jorja MTO Mercedes College Shirt, MTO Mercedes College Tab Tie, MTO Mercedes College Pinafore, T898G\_BDKN Girl's Cotton Tights in Navy; Zoe MTO Mercedes College Blazer, MTO Mercedes College Shirt, MTO Mercedes College Tie, MTO Mercedes College Skirt, T898G\_BDKN Girl's Cotton Tights in Navy.

SINCE 1946  
**midford.com.au**

**Midford Head Office**

Gazal Apparel Pty Limited  
3 - 7 McPherson Street  
Banksmeadow NSW 2019

Phone: + 61 2 9316 2800  
Fax: + 61 2 9316 4865  
Email: [info@midford.com.au](mailto:info@midford.com.au)

**Customer Service**

Mon - Fri: 8:30am - 4:00pm  
Phone: 1800 TEL MID (835 643)  
Fax: 1800 FAX MID (329 643)

**Orders**

Email: [orders@midford.com.au](mailto:orders@midford.com.au)  
Online: [www.midford.com.au](http://www.midford.com.au)



**DOWNLOAD THE APP!**

(Just search for 'Midford')